

WAAS CH <b>45705</b> <b>W22A</b>	APP CRS <b>218°</b>	Rwy Ldg TDZE Apt Elev	<b>7098</b> <b>753</b> <b>768</b>
--	------------------------	-----------------------------	---

# RNAV (GPS) RWY 22

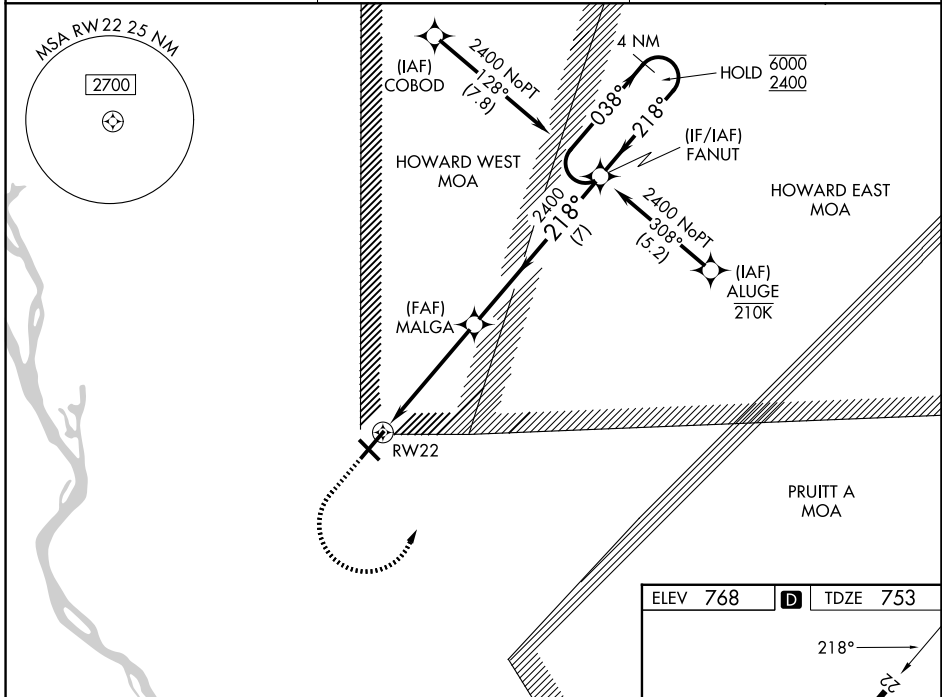
QUINCY RGNL-BALDWIN FLD (UIN)

RNP APCH - GPS.

For uncompensated Baro-VNAV systems, LNAV/VNAV NA below -21°C or above 54°C. Baro-VNAV and VDP NA when using Pittsfield altimeter setting. When local altimeter setting not received, use Pittsfield altimeter setting and increase LPV DA to 1073 feet and all visibilities 1/8 SM. Increase LNAV/VNAV DA to 1120 feet and all visibilities 1/8 SM. Increase all MDAs 80 feet and LNAV visibility Cat C/D 1/8 SM.

MISSED APPROACH: Climb to 1300 then climbing left turn to 2400 direct FANUT and hold.

ASOS <b>121.425</b>	KANSAS CITY CENTER <b>126.225 317.775</b>	UNICOM <b>123.0 (CTAF)</b>
------------------------	--	-------------------------------



EC-3, 14 MAY 2026 to 11 JUN 2026

EC-3, 14 MAY 2026 to 11 JUN 2026

ELEV 768	<b>D</b>	TDZE 753
----------	----------	----------

This detailed diagram shows the final approach segment. It starts with a 4 NM holding pattern at 6000 feet, descending to 2400 feet. The approach path includes a 1.2 NM segment to MALGA at 2400 feet, followed by a 3.8 NM segment to FANUT at 2400 feet, and a final 7 NM segment to RWY 22. The approach is subject to various Minimum Obstacle Altitudes (MOAs): HOWARD WEST MOA, HOWARD EAST MOA, and PRUITT A MOA. A Minimum Safe Altitude (MSA) circle is shown for RWY 22 with a 25 NM radius and a minimum altitude of 2700 feet.

1300	2400	FANUT
------	------	-------

GP 3.00°  
TCH 46

HIRL Rwy 4-22 **1**  
MIRL Rwy 13-31 **1**  
REIL Rwy 22 **1**

1300	2400	FANUT	MALGA	FANUT	4 NM Holding Pattern
1.2 NM to RW22	1.2 NM	3.8 NM	7 NM		
CATEGORY	A	B	C	D	
LPV DA		1003-3/4	250 (300-3/4)		
LNAV/VNAV DA		1050-7/8	297 (300-7/8)		
LNAV MDA	1180-1	427 (500-1)	1180-1/4	427 (500-1/4)	
CIRCLING	1180-1 412 (500-1)	1220-1 452 (500-1)	1240-1/2 472 (500-1/2)	1320-2 552 (600-2)	