

| | | | |
|--|------------------------|---|-------------|
| WAAS CH 53510 W04A | APP CRS 038° | Rwy Ldg TDZE 763 Apt Elev 768 | 7098 |
|--|------------------------|---|-------------|


RNAV (GPS) RWY 4

QUINCY RGNL-BALDWIN FLD (UIN)

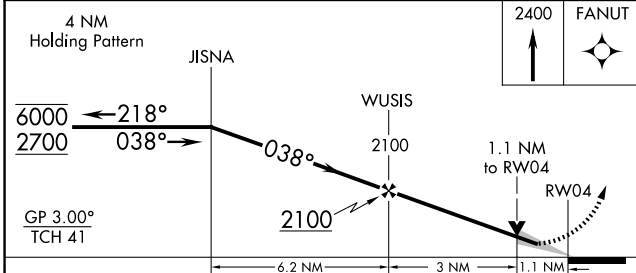
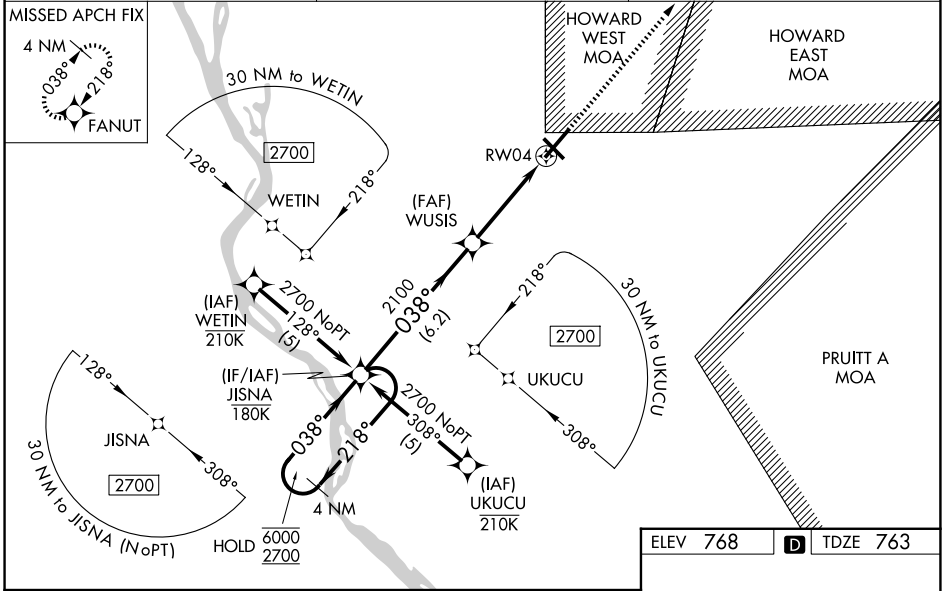
RNP APCH - GPS.

▼ For uncompensated Baro-VNAV systems, LNAV/VNAV NA below -21°C or above 54°C. Baro-VNAV and VDP NA when using P/Q altimeter setting. When local altimeter setting not received, use Pittsfield altimeter setting and increase LPV DA to 1033 feet; increase LNAV/VNAV DA to 1104 feet and all visibilities 1/8 SM. Increase all MDAs 80 feet and LNAV visibility Cat C/D 3/8 SM. For inop ALS when local altimeter setting not received, increase LPV all Cats visibility to 7/8 SM; increase LNAV/VNAV all Cats visibility to 1 SM; increase LNAV Cat C and D visibility to 1/8 SM. For inop ALS increase LNAV/VNAV all Cats visibility to 7/8 SM.

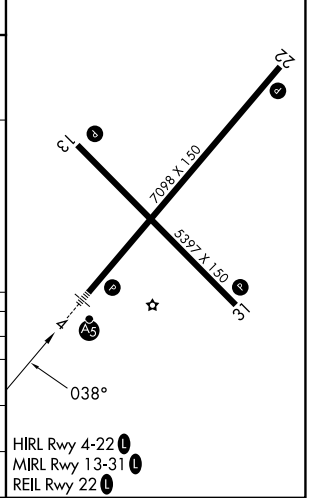
▲ MISSED APPROACH: Climb to 2400 direct FANUT and hold.

MALSR 

| | | |
|------------------------|--|---------------------------------|
| ASOS 121.425 | KANSAS CITY CENTER 126.225 317.775 | UNICOM 123.0 (CTAF) 0 |
|------------------------|--|---------------------------------|



| | | |
|----------|----------|----------|
| ELEV 768 | D | TDZE 763 |
|----------|----------|----------|



| CATEGORY | A | B | C | D |
|--------------|-----------------------|-----------------------|-------------------------------|-----------------------|
| LPV DA | | 963-1/2 | 200 (200-1/2) | |
| LNAV/VNAV DA | | 1034-1/2 | 271 (300-1/2) | |
| LNAV MDA | 1160-1/2 | 397 (400-1/2) | 1160-5/8 | 397 (400-5/8) |
| CIRCLING | 1180-1 412 (500-1) | 1220-1 452 (500-1) | 1240-1 1/2 472 (500-1 1/2) | 1320-2 552 (600-2) |

EC-3, 14 MAY 2026 to 11 JUN 2026

EC-3, 14 MAY 2026 to 11 JUN 2026