

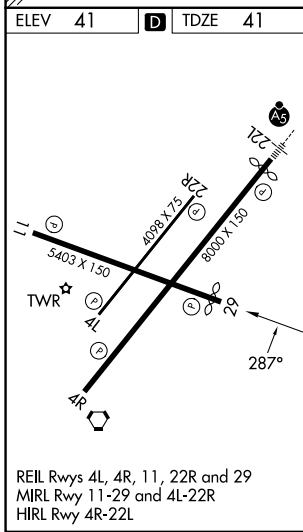
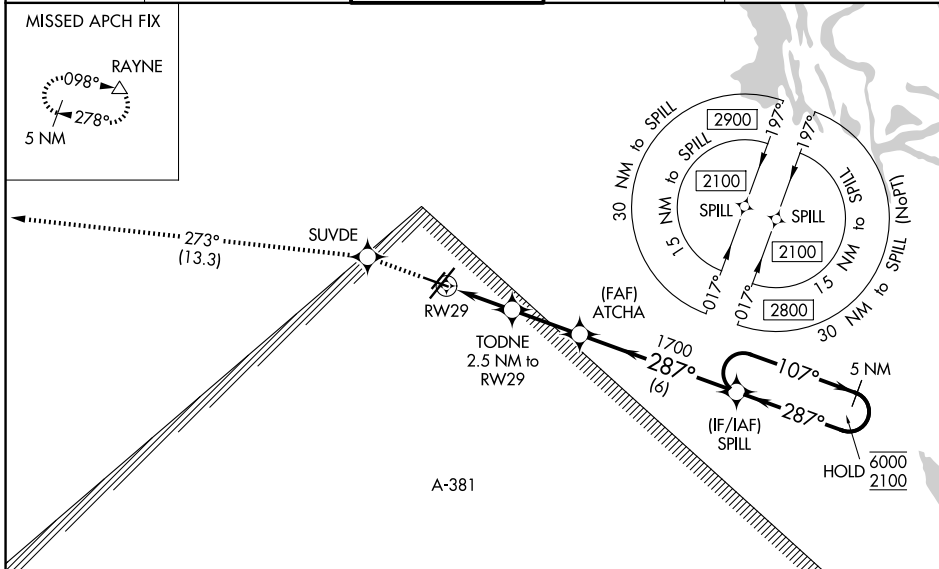
| | | |
|--|------------------------|---|
| WAAS CH 45703 W29A | APP CRS 287° | Rwy Ldg 5155 TDZE 41 Apt Elev 41 |
|--|------------------------|---|

RNAV (GPS) RWY 29

LAFAYETTE RGNL/PAUL FOURNET FLD (L.F.T.)

| | | |
|---|--|--|
| RNP APCH - GPS. | | <p>MISSED APPROACH: Climb to 2800 direct SUVDE and on track 273° to RAYNE and hold.</p> |
| <p>⚠ Rwy 29 helicopter visibility reduction below 3/4 SM NA. For uncompensated Baro-VNAV systems, LNAV/VNAV NA below -4°C or above 54°C. Circling Rwy 11, 4R, 4L, and 22R NA at night. Baro-VNAV and VDP NA when using ARA altimeter setting. When local altimeter setting not received, use ARA altimeter setting and increase LPV DA to 320 feet and all visibilities 1/2 SM. Increase LNAV/VNAV DA to 320 feet and visibilities 1/2 SM. Increase all MDAs 40 feet and LNAV visibility Cat C/D 1/2 SM, and Circling visibility Cat C/D 1/2 SM.</p> | | |

| | | | | |
|-----------------------|--|---|-------------------------|-------------------------|
| ATIS 134.05 | LAFAYETTE APP CON★ 121.1 363.0 | LAFAYETTE TOWER★ 118.5 (CTAF) 257.8 | GND CON 121.8 | UNICOM 122.95 |
|-----------------------|--|---|-------------------------|-------------------------|



| | | | |
|---|----------------------|----------------------|----------------------|
| ELEV 41 | D | TDZE 41 | |
| 2800 | SUVDE | RAYNE | 5 NM Holding Pattern |
| ↑ | ⬠ | tr 273° | △ |
| <p>TODNE 2.5 NM to RWY 29</p> <p>ATCHA 1700</p> <p>1 NM to RWY 29</p> <p>880</p> <p>1700</p> <p>107° → 6000</p> <p>← 287° 2100</p> <p>GP 3.00° TCH 51</p> | | | |
| <p>1 NM 1.5 NM 2.6 NM 6 NM</p> | | | |
| CATEGORY | A | B | C |
| LPV DA | DA | 291-3/4 | 250 (300-3/4) |
| LNAV/VNAV DA | DA | 291-3/4 | 250 (300-3/4) |
| LNAV MDA | | 400-1 | 359 (400-1) |
| CIRCLING | 500-1 459 (500-1) | 580-1 539 (600-1) | 700-2 659 (700-2) |

SC-4, 14 MAY 2026 to 11 JUN 2026

SC-4, 14 MAY 2026 to 11 JUN 2026