

VORTAC LFT <b>109.8</b> Chan <b>35</b>	APP CRS <b>137°</b>	Rwy Ldg TDZE <b>42</b> Apt Elev <b>42</b>	<b>5403</b>
--	------------------------	---	-------------

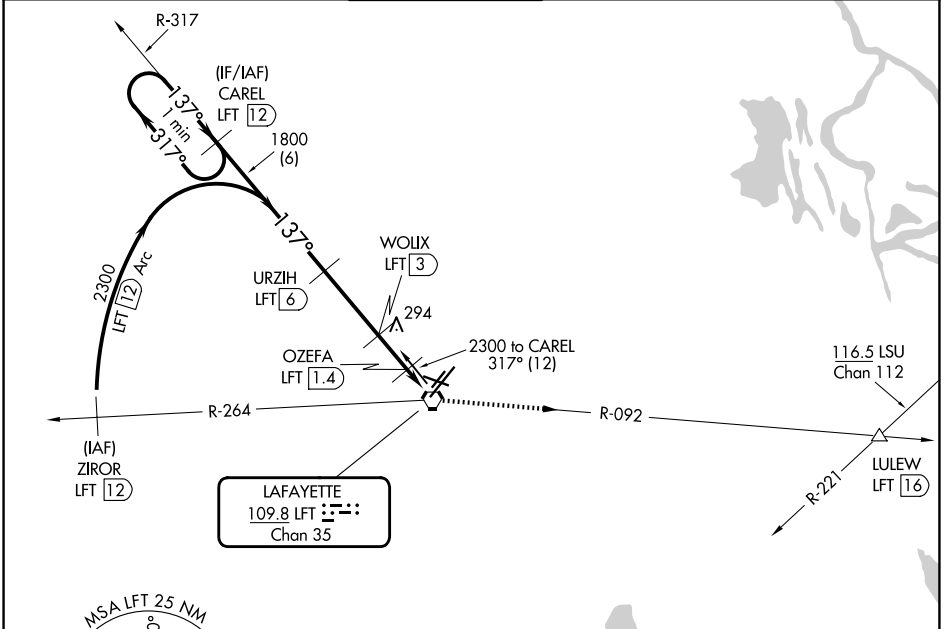
# VOR/DME RWY 11

LAFAYETTE RGNI/PAUL FOURNET FLD (L.F.T)

**⚠** Procedure NA at night. Helicopter visibility reduction below 1 SM NA. When local altimeter setting not received, use Acadiana Rgnl altimeter setting and increase all MDAs 40 feet, increase Circling visibility Cat C/D ¼ SM.

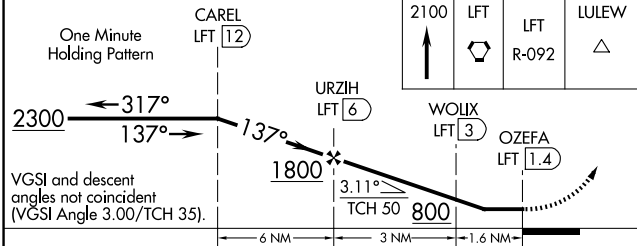
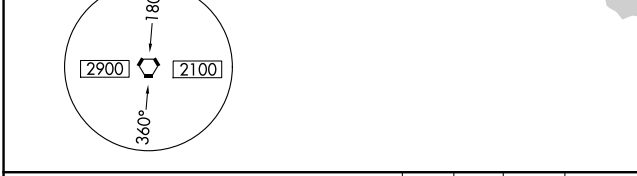
**MISSED APPROACH:** Climb to 2100 to LFT VORTAC and on LFT VORTAC R-092 to LULEW/LFT 16 DME.

ATIS <b>134.05</b>	LAFAYETTE APP CON ★ <b>121.1 363.0</b>	LAFAYETTE TOWER ★ <b>118.5 (CTAF) 0 257.8</b>	GND CON <b>121.8</b>	UNICOM <b>122.95</b>
-----------------------	---	--	-------------------------	-------------------------



SC-4, 14 MAY 2026 to 11 JUN 2026

SC-4, 14 MAY 2026 to 11 JUN 2026



CATEGORY	A	B	C	D
S-11	660-1 618 (700-1)		660-1¼ 618 (700-1¼)	660-2 618 (700-2)
CIRCLING	660-1 618 (700-1)		700-1¼ 658 (700-1¼)	700-2 658 (700-2)

