


LOC I-BVO 111.3	APP CRS 176°	Rwy ldg TDZE Apt Elev	6201 694 717
---------------------------	------------------------	-----------------------------	---

LOC RWY 17

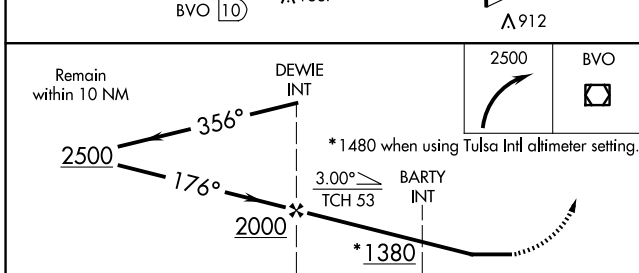
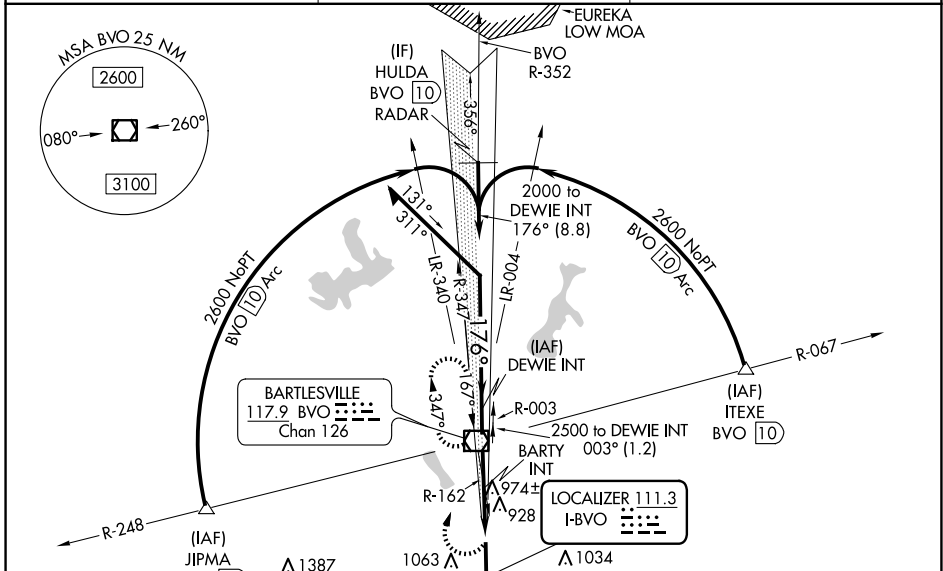
BARTLESVILLE MUNI (BVO)

⚠ Circling NA east of Rwy 17-35. Rwy 17 helicopter visibility reduction below ¾ SM NA. When local altimeter setting not received, use Tulsa Intl altimeter setting and increase all MDAs 100 feet and S-17 visibility Cat C ¼ SM, and Circling Cats B and C ½ SM; increase BARTY fix minimums visibility Cat C ¼ SM. For inop ALS, increase S-17 visibility Cats A and B to 1 SM. For inop ALS when using Tulsa Intl altimeter setting, increase S-17 visibility Cat A to 1 SM and Cat C to 2 ½ SM, and BARTY fix minimums S-17 visibility Cats A and B to 1 SM.

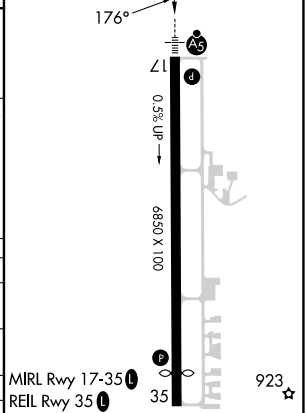
MALSRL


MISSED APPROACH: Climbing right turn to 2500 direct BVO VOR/DME and hold, continue climb-in-hold to 2500.

ASOS 132.675	KANSAS CITY CENTER 128.6 282.325	CTAF 122.825
------------------------	--	------------------------



ELEV 717	D	TDZE 694
----------	----------	----------



CATEGORY	A	B	C	D
S-17 *	1380-¾	686 (700-¾)	1380-1½ 686 (700-1½)	NA
C CIRCLING	1380-1	663 (700-1)	1400-2 683 (700-2)	NA
BARTY FIX MINIMUMS (DUAL VOR RECEIVERS REQUIRED)				
S-17	1240-¾	546 (600-¾)	1240-1½ 546 (600-1½)	NA
C CIRCLING	1380-1	663 (700-1)	1400-2 683 (700-2)	NA

MIRL Rwy 17-35	35	923			
REL Rwy 35	35				
FAF to MAP 4.9 NM					
Knots	60	90	120	150	180
Min:Sec	4:54	3:16	2:27	1:58	1:38

SC-1, 14 MAY 2026 to 11 JUN 2026

SC-1, 14 MAY 2026 to 11 JUN 2026