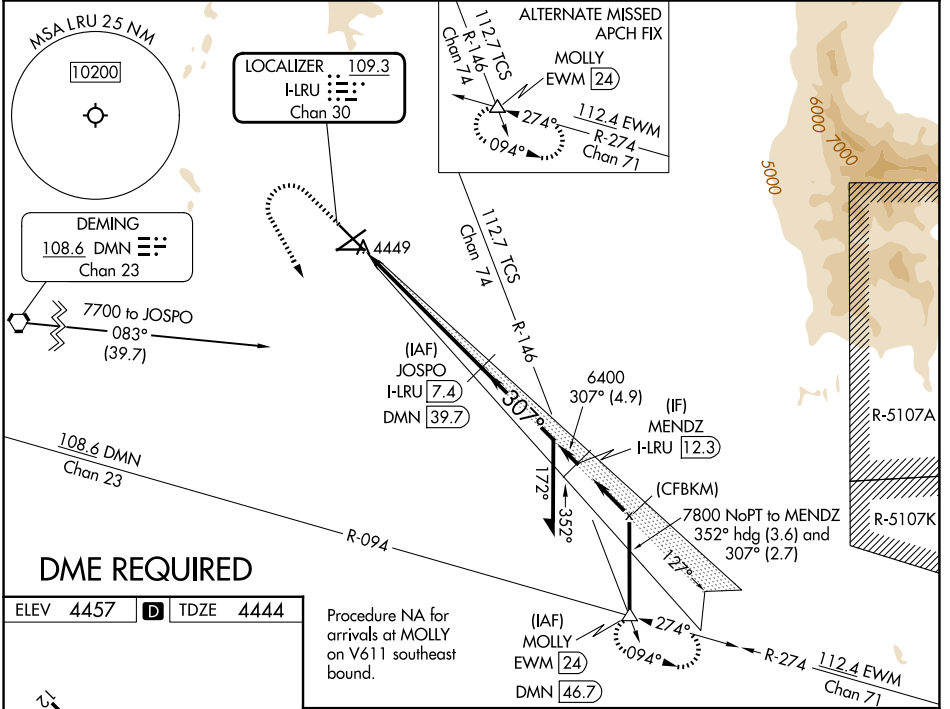


| | | | |
|--|------------------------|-----------------------------|---|
| LOC/DME I-LRU 109.3 Chan 30 | APP CRS 307° | Rwy Ldg TDZE Apt Elev | 7500 4444 4457 |
|--|------------------------|-----------------------------|---|

ILS or LOC RWY 30

LAS CRUCES INTL(LRU)

| | | |
|---|--------------|---|
| <p>V NA DME required. When local altimeter setting not received, use Deming altimeter setting: increase DA to 4758 feet and all visibilities 1/8 mile; increase all MDA 120 feet and visibility Cat C and D 1/2 mile. VDP NA when using Deming altimeter setting.</p> | <p>MALSR</p> | <p>MISSED APPROACH: Climb to 5100 then climbing left turn to 9000 on heading 139° and on DMN VORTAC R-094 to MOLLY INT/DMN 46.7 DME and hold, continue climb-in-hold to 9000.</p> |
| | | |



ELEV 4457 **D** TDZE 4444

REIL Rwy 12
HIRL Rwy 12-30 **0**
MIRL Rwy 4-22 and 8-26 **0**

Procedure NA for arrivals at MOLLY on V611 southeast bound.

| | | | | | |
|------|----------|-----------|-------|-----------------|---------------------|
| 5100 | 9000 | DMN R-094 | MOLLY | JOSPO I-LRU 7.4 | Remain within 10 NM |
| ↑ | hdg 139° | | △ | | |

*LOC only.

| | | | | |
|-----------|------------|------|------|------|
| I-LRU 1.4 | *I-LRU 2.2 | 6400 | 127° | 6400 |
| | | 307° | | 6400 |

GS 3.00° TCH 47

| CATEGORY | A | B | C | D |
|----------|------------------------|-----------------------|-------------------------------|-------------------------------|
| S-ILS 30 | 4644-1/2 200 (200-1/2) | | | |
| S-LOC 30 | 4720-1/2 276 (300-1/2) | | | |
| CIRCLING | 4900-1 443 (500-1) | 5040-1 583 (600-1) | 5320-2 1/2 863 (900-2 1/2) | 5320-2 3/4 863 (900-2 3/4) |

SW-1, 14 MAY 2026 to 11 JUN 2026

SW-1, 14 MAY 2026 to 11 JUN 2026