

APP CRS 158°	Rwy Ldg 4311
	TDZE 289
	Apt Elev 296

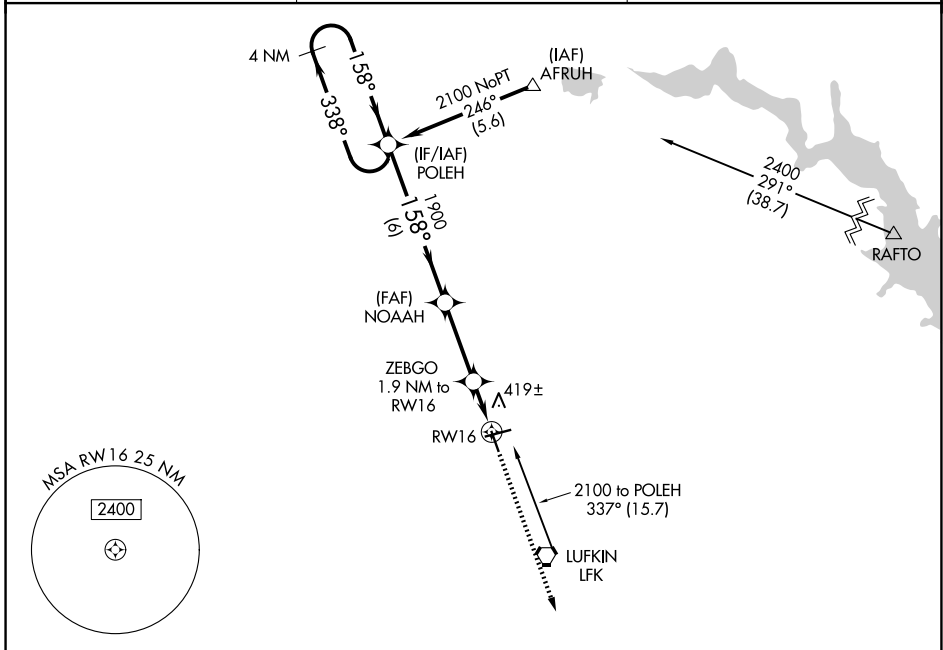
RNAV (GPS) RWY 16

ANGELINA COUNTY (L'FK)

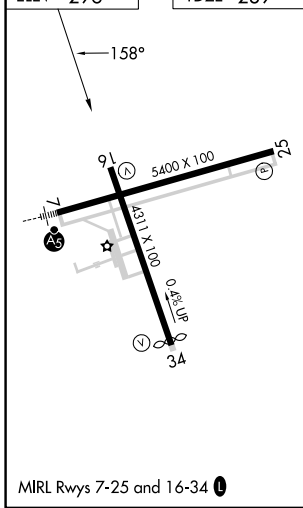
⚠ DME/DME RNP-0.3 NA.
⚠ Straight in Rwy 16 NA at night, Circling Rwy 16, 25 NA at night.
 Rwy 16 helicopter visibility reduction below 1 SM NA.

MISSED APPROACH: Climb to 2000 direct EXISE and hold.

ASOS 120.625	HOUSTON CENTER 125.175 285.575	UNICOM 123.0 (CTAF) 0
------------------------	--	---------------------------------



ELEV 296	TDZE 289
-----------------	-----------------



	4 NM Holding Pattern	POLEH	NOAAH	ZEBGO 1.9 NM to RW16	RW16	2000 EXISE
	2100	158°	1900	940		
	← 338°	→ 158°	→ 158°	→ 3.00° TCH 48		
	6 NM		3 NM		1.9 NM	
CATEGORY	A	B	C	D		
LNAV MDA	680-1	391 (400-1)	680-1½	391 (400-1½)		
CIRCLING	740-1 444 (500-1)	760-1 464 (500-1)	880-1½ 584 (600-1½)	1140-2¾ 844 (900-2¾)		

LUFKIN, TEXAS
 Amdt 1 07DEC17

31°14'N-94°45'W

ANGELINA COUNTY (L'FK)

RNAV (GPS) RWY 16

SC-5, 14 MAY 2026 to 11 JUN 2026

SC-5, 14 MAY 2026 to 11 JUN 2026