

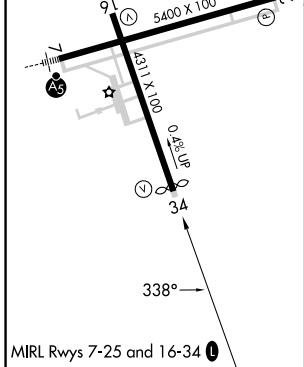
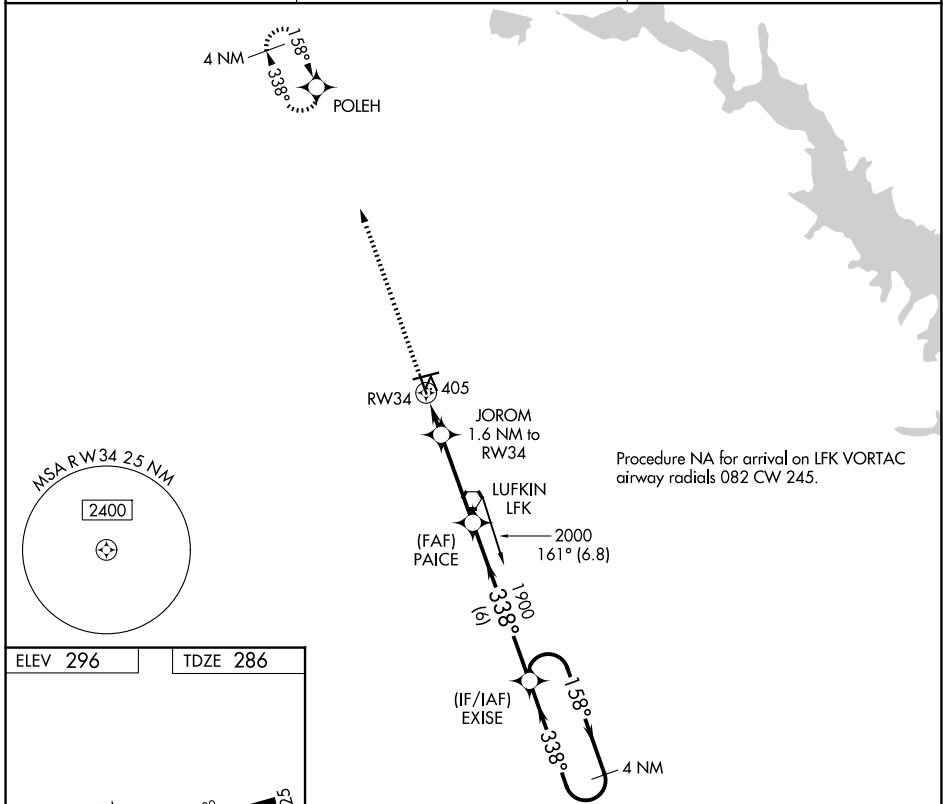
APP CRS 338°	Rwy Ldg TDZE Apt Elev	4204 286 296
------------------------	-----------------------------	---

RNAV (GPS) RWY 34

ANGELINA COUNTY (L'FK)

<p>▼ DME/DME RNP-0.3 NA. Circling Rwy 16, 25 NA at night. ▲ Rwy 34 helicopter visibility reduction below ¾ SM NA.</p>	MISSED APPROACH: Climb to 2100 direct POLEH and hold.
---	---

ASOS 120.625	HOUSTON CENTER 125.175 285.575	UNICOM 123.0 (CTAF) 0
------------------------	--	---------------------------------



2100 POLEH	EXISE 4 NM Holding Pattern			
JOROM 1.6 NM to RW34	PAICE			
1 NM to RW34	3.00° TCH 55			
840	1900			
1 NM	0.6	3.3 NM	6 NM	
CATEGORY	A	B	C	D
LNAV MDA	660-1 374 (400-1)			
CIRCLING	740-1 444 (500-1)	760-1 464 (500-1)	880-1½ 584 (600-1½)	1140-2¾ 844 (900-2¾)

SC-5, 14 MAY 2026 to 11 JUN 2026

SC-5, 14 MAY 2026 to 11 JUN 2026