


WAAS CH 50105 W07A	APP CRS 073°	Rwy Ldg TDZE Apt Elev	5400 287 296
--	------------------------	-----------------------------	---

RNAV (GPS) RWY 7

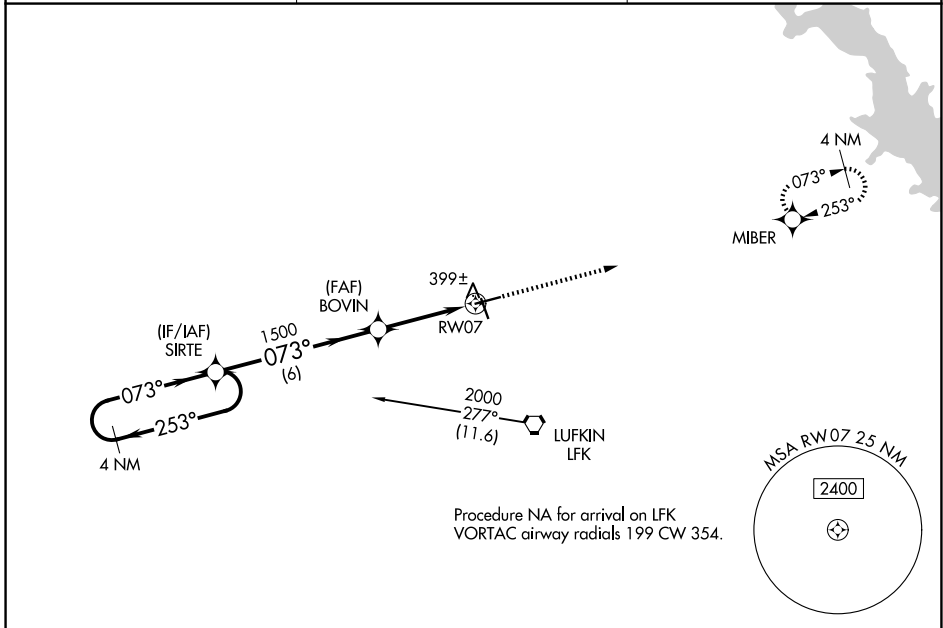
ANGELINA COUNTY (L.F.K)

⚠ For uncompensated Baro-VNAV systems, LNAV/VNAV NA below -4°C (25°F) or above 54°C (130°F). DME/DME RNP-0.3 NA. Circling Rwy 16, 25 NA at night.

MALSR 

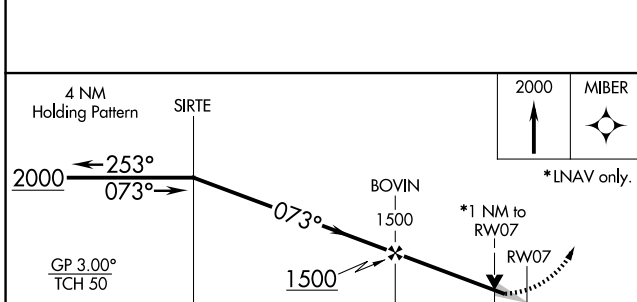
MISSED APPROACH: Climb to 2000 direct MIBER and hold.

ASOS 120.625	HOUSTON CENTER 125.175 285.575	UNICOM 123.0 (CTAF) 0
------------------------	--	---------------------------------

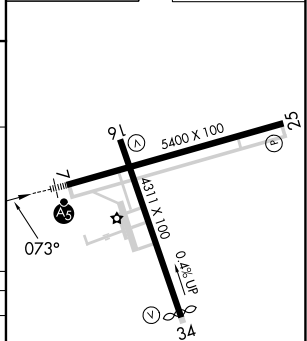


SC-5, 14 MAY 2026 to 11 JUN 2026

SC-5, 14 MAY 2026 to 11 JUN 2026



ELEV 296	TDZE 287
----------	----------



CATEGORY	A	B	C	D
LPV DA		537-½	250 (300-½)	
LNAV/VNAV DA		563-½	276 (300-½)	
LNAV MDA	660-½	373 (400-½)	660-⅝	373 (400-⅝)
CIRCLING	740-1 444 (500-1)	760-1 464 (500-1)	880-1½ 584 (600-1½)	1140-2¾ 844 (900-2¾)

MIRL Rwy 7-25 and 16-34 **0**