

LOC/DME I-GRB 109.5 Chan 32	APP CRS 242°	Rwy Ldg 7699 TDZE 682 Apt Elev 695
---	------------------------	---

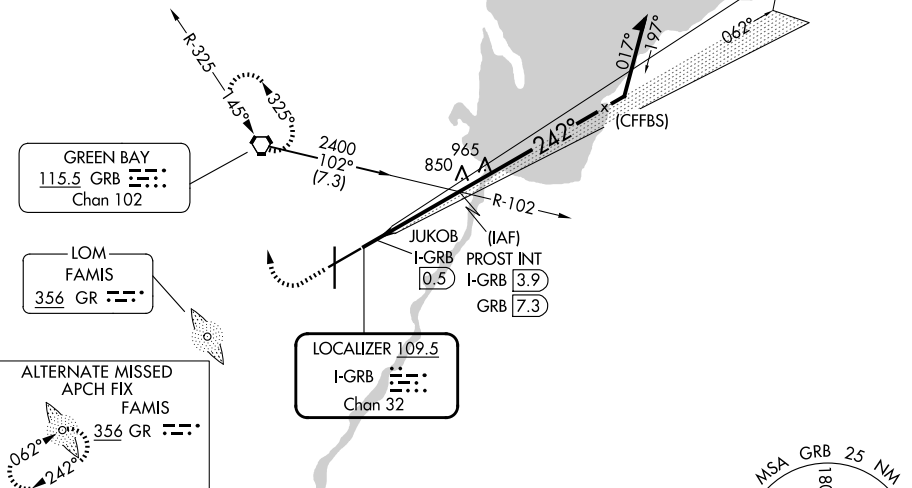
LOC BC RWY 24

GREEN BAY/AUSTIN STRAUBEL INTL (GRB)

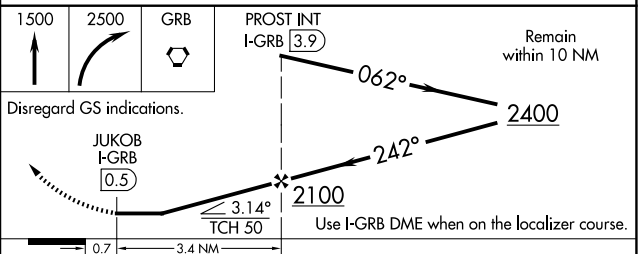
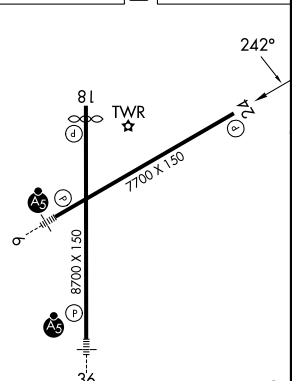
		MISSED APPROACH: Climb to 1500 then climbing right turn to 2500 direct GRB VORTAC and hold.	
ATIS 124.1	GREEN BAY APP CON* 119.4 338.2	GREEN BAY TOWER* 118.7(CTAF) 257.8	GND CON 121.9

Procedure NA for arrival on GRB VORTAC
airway radials 085 CW 161.

BACK COURSE



ELEV 695	D	TDZE 682
----------	----------	----------



CATEGORY	A	B	C	D
S-24	1100-1 418 (500-1)		1100-1½ 418 (500-1½)	
CIRCLING	1200-1 505 (600-1)		1300-1¾ 605 (700-1¾)	1300-2 605 (700-2)

REIL Rwy 18 **1**
HIRL Rwys 6-24 and 18-36 **1**

FAF to MAP 3.4 NM

Knots	60	90	120	150	180
Min:Sec	3:24	2:16	1:42	1:21	1:08

EC-3, 14 MAY 2026 to 11 JUN 2026

EC-3, 14 MAY 2026 to 11 JUN 2026