

WAAS CH 42902 W36A	APP CRS 002°	Rwy Ldg TDZE Apt Elev	8201 684 695
--	------------------------	-----------------------------	---

RNAV (GPS) RWY 36

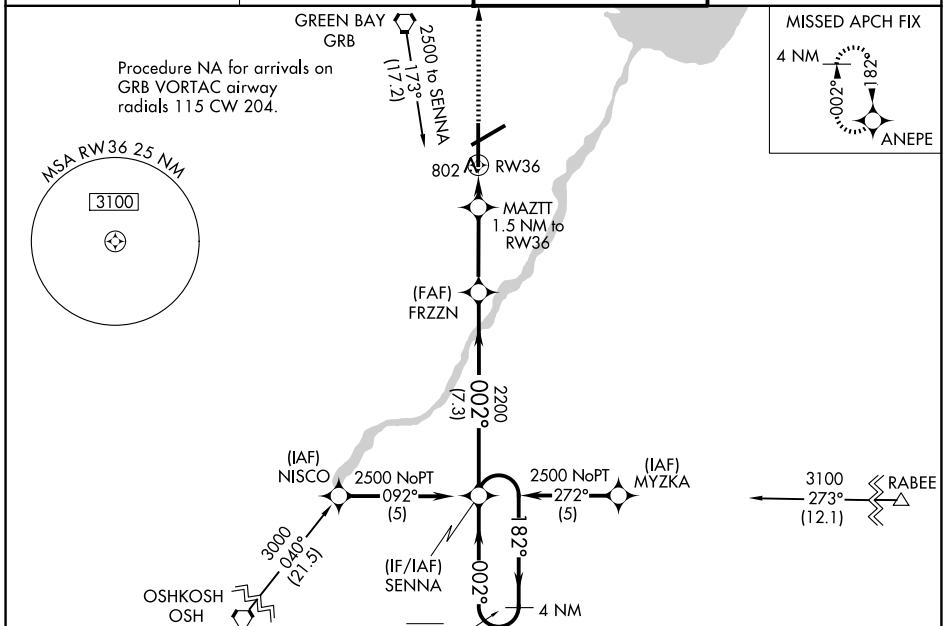
GREEN BAY/AUSTIN STRAUBEL INTL (GRB)

RNP APCH.

▼ For uncompensated Baro-VNAV systems, LNAV/VNAV NA below -1.6°C or above 54°C. For inop ALS, increase LNAV/VNAV all Cats visibility to RVR 6000 and LNAV Cats C/D visibility to RVR 5500.
 ** RVR 1800 authorized with use of FD or AP or HUD to DA.

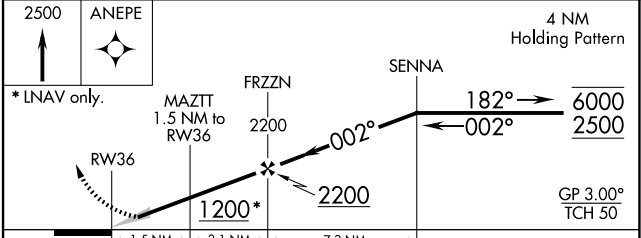
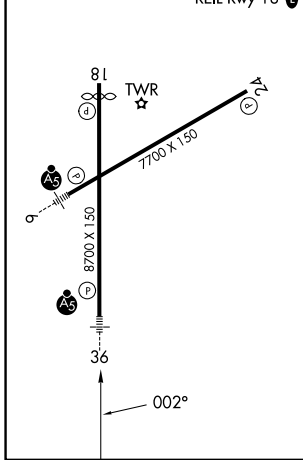
MALS R MISSED APPROACH: Climb to 2500 direct ANEPE and hold.

ATIS 124.1	GREEN BAY APP CON* 119.4 338.2	GREEN BAY TOWER* 118.7(CTAF) 257.8	GND CON 121.9
----------------------	--	--	-------------------------



ELEV 695	D	TDZE 684
----------	----------	----------

HIRL Rwy 6-24 and 18-36
REIL Rwy 18



CATEGORY	A	B	C	D
LPV DA	884/24		200 (200-½)	
LNAV/VNAV DA	1097/40		413 (500-¾)	
LNAV MDA	1060/24	376 (400-½)	1060/35	376 (400-¾)
CIRCLING	1200-1	505 (600-1)	1300-1¾ 605 (700-1¾)	1300-2 605 (700-2)

EC-3, 14 MAY 2026 to 11 JUN 2026

EC-3, 14 MAY 2026 to 11 JUN 2026