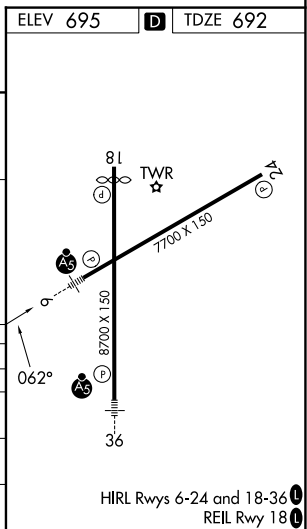
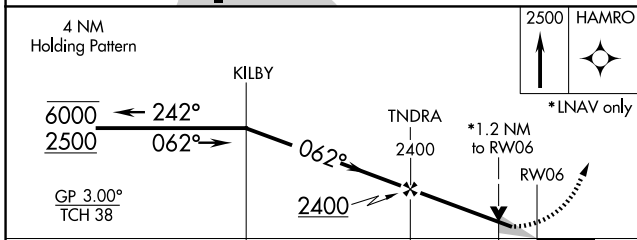
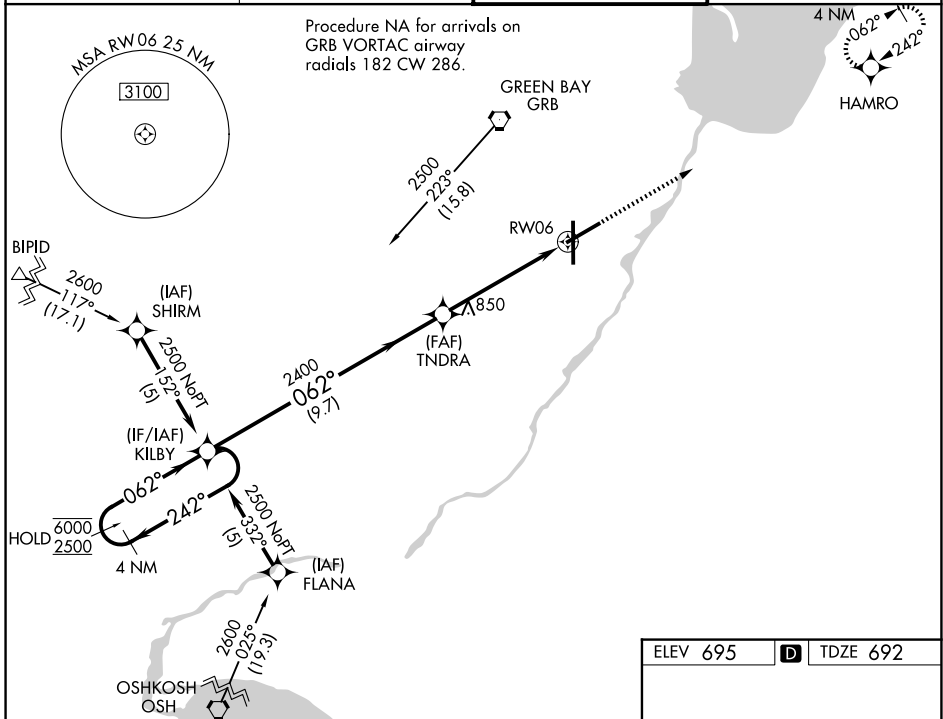


WAAS CH 63015 W06A	APP CRS 062°	Rwy Idg TDZE Apt Elev	7699 692 695
--	------------------------	-----------------------------	---

RNAV (GPS) RWY 6

GREEN BAY/AUSTIN STRAUBEL INTL (GRB)

RNP APCH. ▼ For uncompensated Baro-VNAV systems, LNAV/VNAV NA below -16°C or above 54°C. For inop ALS, increase LNAV/VNAV all Cats visibility to RVR 4500, and LNAV Cts C and D ASR visibility to RVR 6000. **RVR 1800 authorized with use of FD or AP or HUD to DA		MALSR AS	MISSED APPROACH: Climb to 2500 direct HAMRO and hold.
ATIS 124.1	GREEN BAY APP CON* 119.4 338.2	GREEN BAY TOWER* 118.7(CTAF) 257.8	GND CON 121.9



CATEGORY	A	B	C	D
LPV DA**	892/24		200 (200-½)	
LNAV/VNAV DA	1000/24 308 (400-½)		1000/40 308 (400-¾)	
LNAV MDA	1100/24 408 (500-½)		1100/40 408 (500-¾)	
CIRCLING	1200-1 505 (600-1)		1300-1¾ 605 (700-1½) 1300-2 605 (700-2)	

EC-3, 14 MAY 2026 to 11 JUN 2026

EC-3, 14 MAY 2026 to 11 JUN 2026