

WAAS CH 90330 W13A	APP CRS 127°	Rwy Ldg 5200 TDZE 1196 Apt Elev 1201
----------------------------------------	------------------------	-----------------------------------------------------------------

RNAV (GPS) RWY 13

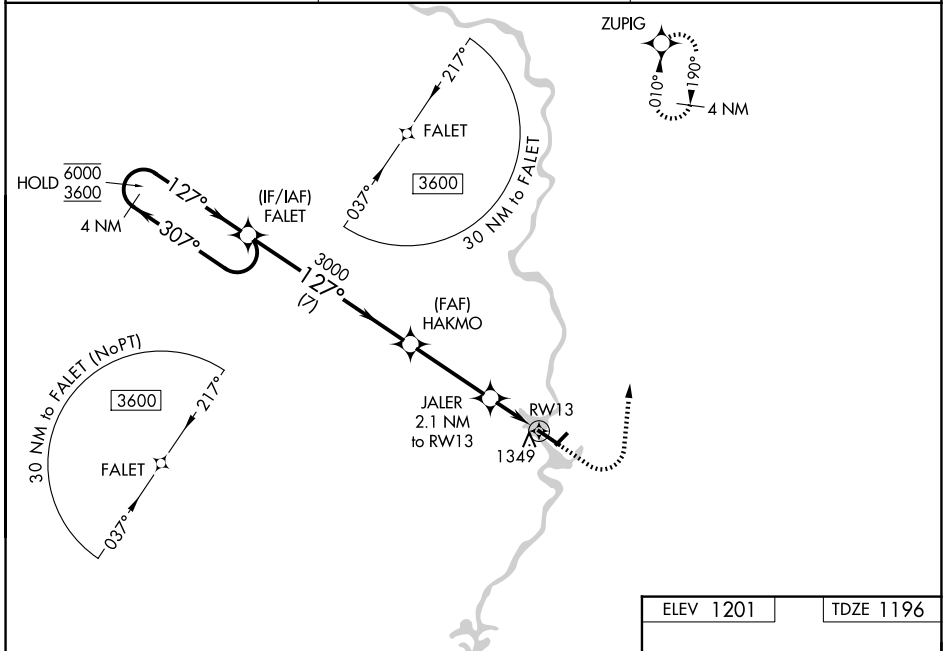
WAUSAU DOWNTOWN (A U W)

RNP APCH.

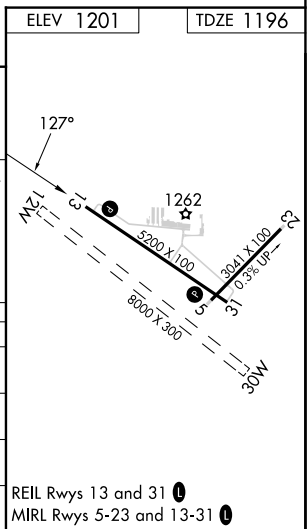
⚠ Circling NA to Rws 12W and 30W.
⚠ Circling NA southwest of Rwy 13-31.
 For uncompensated Baro-VNAV systems, LNAV/VNAV NA below -17°C or above 54°C.

MISSED APPROACH: Climb to 1800 then climbing left turn to 4000 direct ZUPIG and hold.

ASOS 125.925	MINNEAPOLIS CENTER 124.4 317.7	UNICOM 122.7 (CTAF) 0
------------------------	------------------------------------------	---------------------------------



4 NM Holding Pattern		FALET	1800	4000	ZUPIG
6000 ← 307°		FALET	↑	↶	☀
3600 → 127°		HAKMO			
GP 3.00°		JALER	*LNAV only.		
TCH 43		3000	2.1 NM to RWY 13	1.1 NM to RWY 13	
		*1900			
		7 NM	3.4 NM	1 NM	1.1 NM
CATEGORY	A	B	C	D	
LPV DA		1446-3/4	250 (300-3/4)		
LNAV/VNAV DA		1534-1 1/8	338 (400-1 1/8)		
LNAV MDA	1600-1	404 (400-1)	1600-1 1/8	404 (400-1 1/8)	
CIRCLING	1840-1	639 (700-1)	1960-2 1/4	2260-3	
			759 (800-2 1/4)	1059 (1100-3)	



EC-3, 14 MAY 2026 to 11 JUN 2026

EC-3, 14 MAY 2026 to 11 JUN 2026