

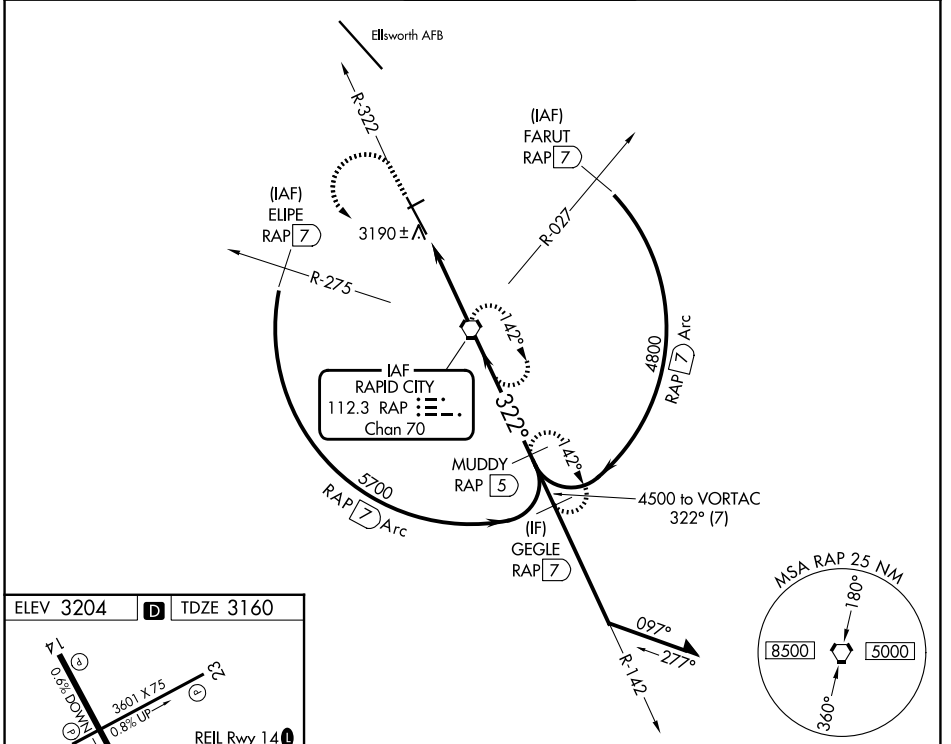
VORTAC RAP 112.3 Chan 70	APP CRS 322°	Rwy Ldg 8701 TDZE 3160 Apt Elev 3204
--	------------------------	---

VOR or TACAN RWY 32

RAPID CITY RGNL (RAP)

<p>For inoperative ALS, increase S-32 all Cats visibility to 1 SM.</p>	<p>MALSR</p>	<p>MISSED APPROACH: Climb to 5500 on RAP R-322 then left turn direct RAP VORTAC and hold. (TACAN aircraft continue on RAP R-142 to MUDDY/RAP 5 DME and hold SE, RT, 322° inbound.)</p>

ASOS 118.525	ELLSWORTH APP CON ★ 119.5 259.1	RAPID CITY TOWER ★ 125.85 (CTAF) 0 257.8	GND CON 121.9	UNICOM 122.95
------------------------	---	--	-------------------------	-------------------------

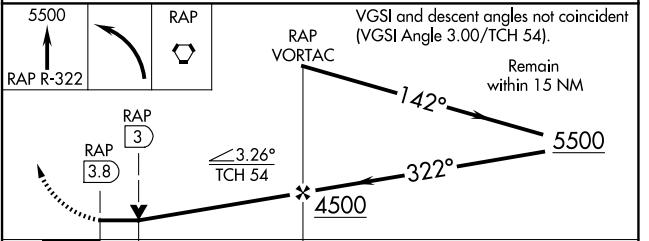


ELEV 3204	D	TDZE 3160
-----------	----------	-----------

The profile view shows the vertical descent from 5500 feet to the runway. Key data points include:

- REIL Rwy 14** (3601 X 75)
- MIRL Rwy 5-23**
- HIRL Rwy 14-32**
- 8701 X 150** (TWR)
- 0.5% DOWN** and **0.8% UP** slopes.
- 3.26° TCH 54** (3.8 NM)
- 322°** heading.
- FAF to MAP 3.8 NM**
- 0.5% UP** slope to the runway.

Knots	60	90	120	150	180
Min:Sec	3:48	2:32	1:54	1:31	1:16



CATEGORY	A	B	C	D	E
S-32	3440/40 280 (300-¾)				
CIRCLING	3660-1 456 (500-1)	3840-1 636 (700-1)	3860-1¾ 656 (700-1¾)	3940-2¼ 736 (700-2¼)	3960-2¾ 756 (800-2¾)

NC-1, 14 MAY 2026 to 11 JUN 2026

NC-1, 14 MAY 2026 to 11 JUN 2026