

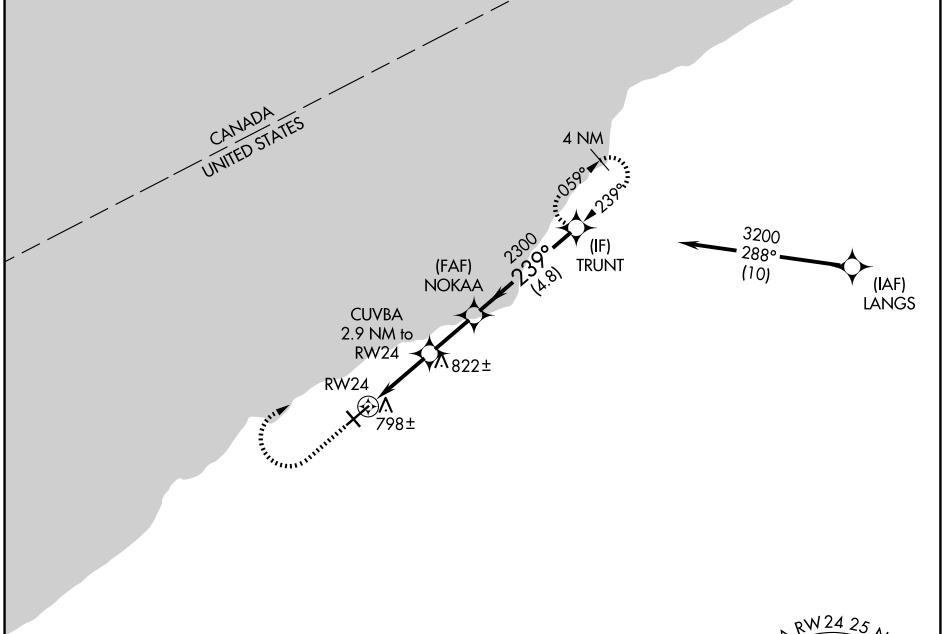
APP CRS 239°	Rwy Ldg TDZE Apt Elev	N/A N/A 692
------------------------	-----------------------------	--

RNAV (GPS)-A

CHAUTAUGUA COUNTY/DUNKIRK (DKK)

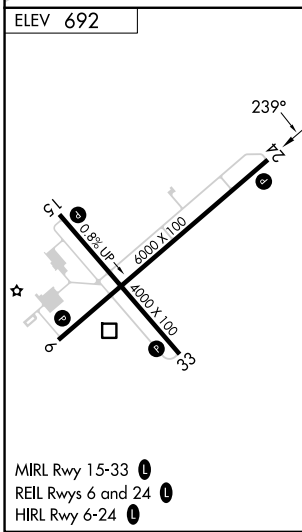
RNP APCH - GPS.	MISSED APPROACH: Climb to 1900 then climbing right turn to 3200 direct TRUNT and hold.
Circling Cat D NA southeast of Rwy 6 and southwest of Rwy 33. Circling Rwy 6, 24, 33 NA at night. -21°C Rwy 6, 24, 33 helicopter visibility reduction below 1 SM NA.	

ASOS 119.275	BUFFALO APP CON 126.5 317.6	UNICOM 123.075 (CTAF) 0
------------------------	---------------------------------------	-----------------------------------



NE-2, 14 MAY 2026 to 11 JUN 2026

NE-2, 14 MAY 2026 to 11 JUN 2026



1900	3200	TRUNT	Visual Segment - Obstacles.	
CATEGORY A B C D				
CIRCLING 1200-1 1320-1 1640-2¾ 2140-3				
508 (600-1) 628 (700-1) 948 (1000-2¾) 1448 (1500-3)				