

LOC/DME I-MWP 109.1 Chan 28	APP CRS 059°	Rwy Ldg TDZE 238 Apt Elev 258
---	------------------------	---

LOC RWY 6

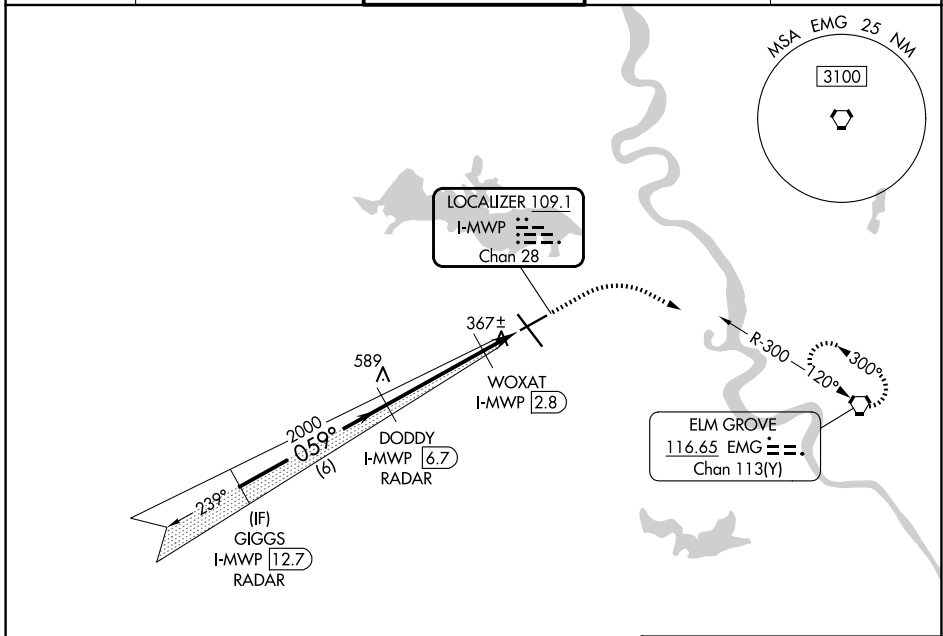
SHREVEPORT RGNL (SHV)

RADAR required for procedure entry. RADAR or DME required.

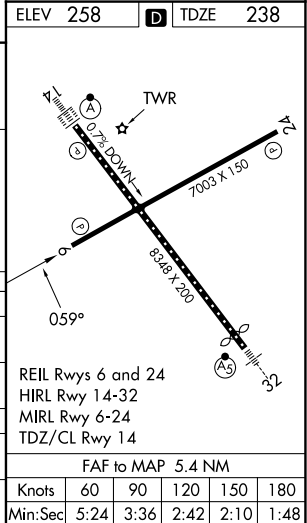
MISSED APPROACH: Climb to 700 then climbing right turn to 2000 direct EMG VORTAC and hold.

ASR Rwy 6 helicopter visibility reduction below 3/4 SM NA.

ATIS 128.45	SHREVEPORT APP CON 119.9 335.55	SHREVEPORT TOWER 121.4 236.775	GND CON 121.175 236.775	CLNC DEL 124.65
-----------------------	---	--	-----------------------------------	---------------------------



	GIGGS I-MWP (12.7) RADAR		DODDY I-MWP (6.7) RADAR		WOXAT I-MWP (2.8)		I-MWP (1.4)		EMG	
	2000		2000		740		740		700	
	059°		059°		3.00° TCH 51		059°		EMG	
	6 NM		4 NM		1.4					
CATEGORY	A	B	C	D	E					
S-LOC 6	740-1	502 (500-1)	740-1 3/8		502 (500-1 3/8)					
CIRCLING	760-1	502 (600-1)	980-2	1100-2 3/4	1100-3					
			722 (800-2)	842 (900-2 3/4)	842 (900-3)					
WOXAT FIX MINIMUMS										
S-LOC 6	620-1	382 (400-1)	620-1 1/8		382 (400-1 1/8)					
CIRCLING	760-1	502 (600-1)	980-2	1100-2 3/4	1100-3					
			722 (800-2)	842 (900-2 3/4)	842 (900-3)					



SC-4, 14 MAY 2026 to 11 JUN 2026

SC-4, 14 MAY 2026 to 11 JUN 2026