

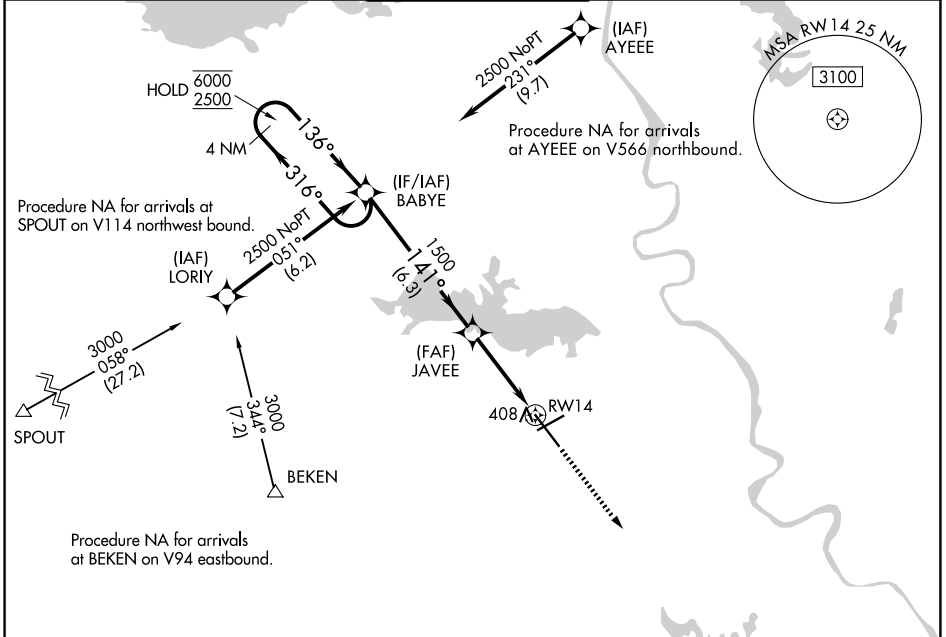
WAAS CH <b>45913</b> <b>W14A</b>	APP CRS <b>141°</b>	Rwy Ldg TDZE Apt Elev	<b>8118</b> <b>258</b> <b>258</b>
--	------------------------	-----------------------------	---

# RNAV (GPS) RWY 14

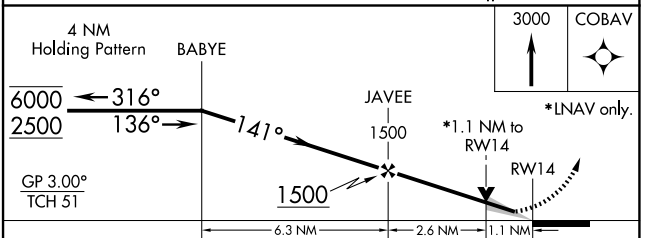
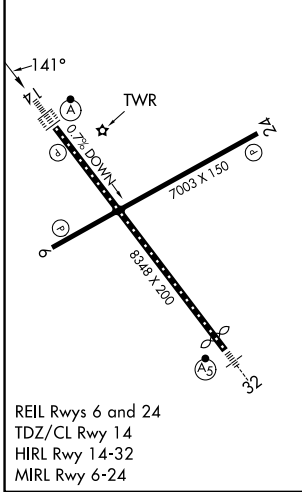
SHREVEPORT RGNL (SHV)

RNP APCH.	<p>For inop ALS, increase LNAV Cat C and D visibility to RVR 6000.</p> <p>For uncompensated Baro-VNAV systems, LNAV/VNAV NA below -6°C or above 54°C.</p>	ALSF-2 	MISSED APPROACH: Climb to 3000 direct COBAV and hold, continue to climb-in-hold to 3000.
-----------	---	------------	--

ATIS <b>128.45</b>	SHREVEPORT APP CON <b>119.9 335.55</b>	SHREVEPORT TOWER <b>121.4 236.775</b>	GND CON <b>121.175 236.775</b>	CLNC DEL <b>124.65</b>
-----------------------	---	--	-----------------------------------	---------------------------



ELEV 258	<b>D</b>	TDZE 258
----------	----------	----------



CATEGORY	A	B	C	D
LPV DA		458/18	200 (200-½)	
LNAV/VNAV DA		640/40	382 (400-¾)	
LNAV MDA	660/24	402 (500-½)	660/40	402 (500-¾)
CIRCLING	760-1	502 (600-1)	980-2 722 (800-2)	1100-2¾ 842 (900-2¾)

SC-4, 14 MAY 2026 to 11 JUN 2026

SC-4, 14 MAY 2026 to 11 JUN 2026