

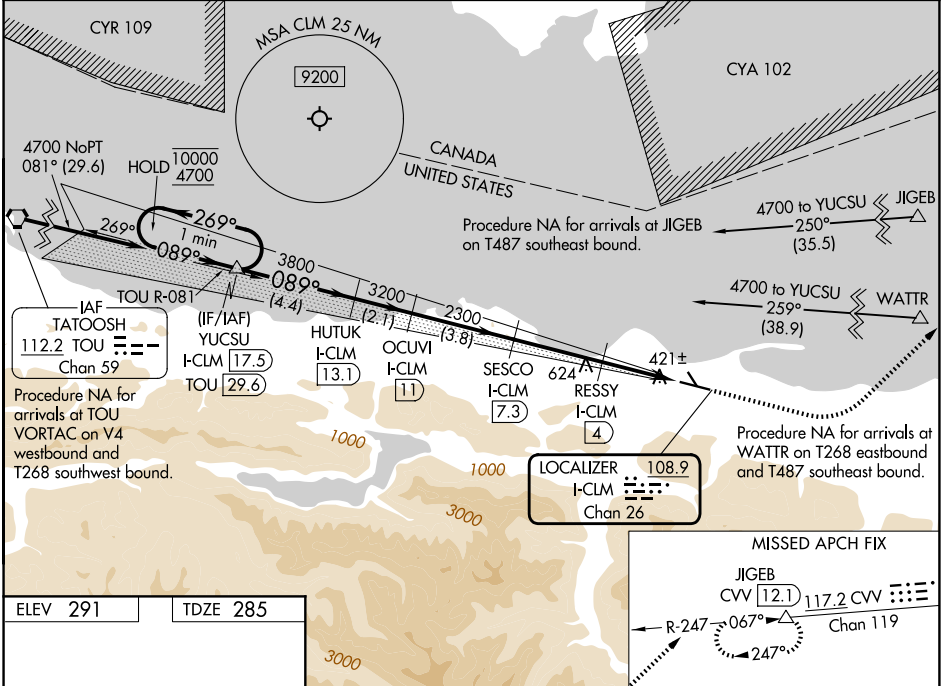
LOC/DME I-CLM <b>108.9</b> Chan 26	APP CRS <b>089°</b>	Rwy Ldg TDZE <b>6347</b> <b>285</b> Apt Elev <b>291</b>
--	------------------------	---

# ILS or LOC RWY 9

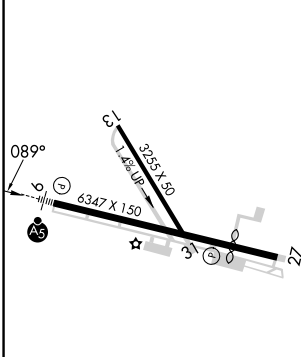
WILLIAM R FAIRCHILD INTL (CLM)

RNAV 1 - GPS. From JIGEB or WATTR.		MALSR 	MISSED APPROACH: Climb to 1000 then climbing left turn to 5400 on heading 030° and CVV VOR/DME R-247 to JIGEB/CVV 12.1 DME and hold, continue climb-in-hold to 5400.
DME required.			
Circling NA south of Rwy 9-27. Circling Rwy 13, 31 NA at night. For inop ALS, increase S-ILS 9 visibility to 7/8 SM.			

ASOS <b>135.175</b>	WHIDBEY APP CON <b>118.2 285.65</b>	CLNC DEL <b>124.15</b>	UNICOM <b>122.975 (CTAF)</b>
------------------------	--	---------------------------	---------------------------------



ELEV 291	TDZE 285
----------	----------

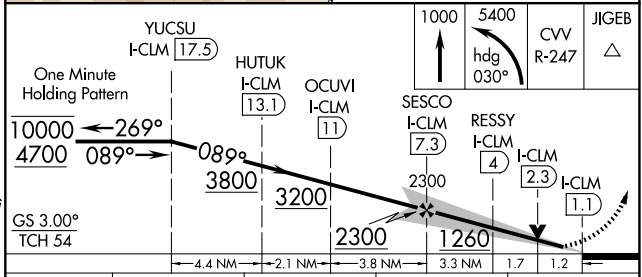


MIRL Rwy 9-27

REIL Rwy 27

FAF to MAP 6.2 NM

Knots	60	90	120	150	180
Min:Sec	6:12	4:08	3:06	2:29	2:04



CATEGORY	A	B	C	D
S-ILS 9	495-1/2 210 (300-1/2)			
S-LOC 9	720-1/2	435 (500-1/2)	720-3/4	435 (500-3/4)
CIRCLING	800-1	509 (600-1)	800-1 1/2	1000-2 1/4
			509 (600-1 1/2)	709 (800-2 1/4)

NW-1, 14 MAY 2026 to 11 JUN 2026

NW-1, 14 MAY 2026 to 11 JUN 2026