

APP CRS 301°	Rwy Ldg TDZE Apt Elev	3510 2974 2977
------------------------	-----------------------------	---

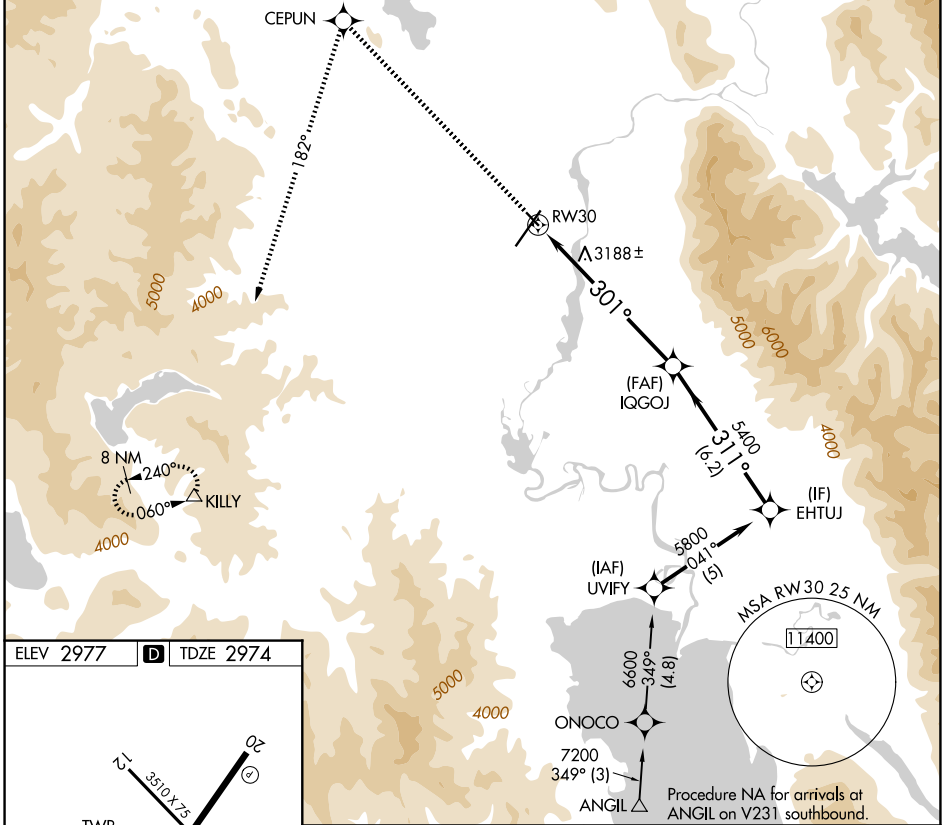
RNAV (GPS) RWY 30

GLACIER PARK INTL (GPI)

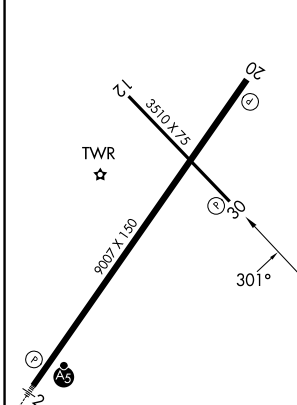
RNP APCH - GPS.
 RWY 30 helicopter visibility reduction below 3/4 SM NA.
 -1.4°C

MISSED APPROACH: Climb to 12000 direct CEPUN and left turn via track 182° to KILLY and hold, continue climb-in-hold to 12000.

ATIS 132.625	SALT LAKE CENTER 127.075 244.875	GLACIER TOWER★ 124.55 (CTAF) 0	GND CON 121.6	UNICOM 122.95
------------------------	--	--	-------------------------	-------------------------



ELEV 2977	D	TDZE 2974
-----------	----------	-----------



12000	CEPUN	182° tr	KILLY	VGSI and descent angles not coincident (VGSI Angle 3.50/TCH 26).	EHTUJ
				IQGOJ	
	RW30	301°	5400	311°	5800
		7 NM		6.2 NM	

CATEGORY	A	B	C	D
LNNAV MDA	3500-1	526 (600-1)	3500-1½	526 (600-1½)
CIRCLING	3520-1 543 (600-1)	3580-1 603 (700-1)	3680-2 703 (800-2)	3760-2½ 783 (800-2½)

REIL Rwy 20 (L)
 MIRL Rwy 12-30 (L)
 HIRL Rwy 2-20 (L)

NW-1, 14 MAY 2026 to 11 JUN 2026

NW-1, 14 MAY 2026 to 11 JUN 2026