

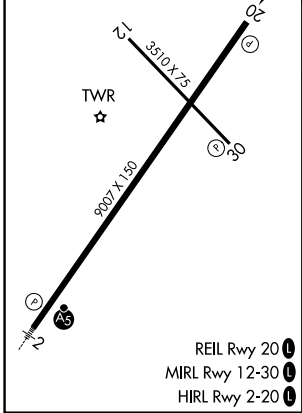
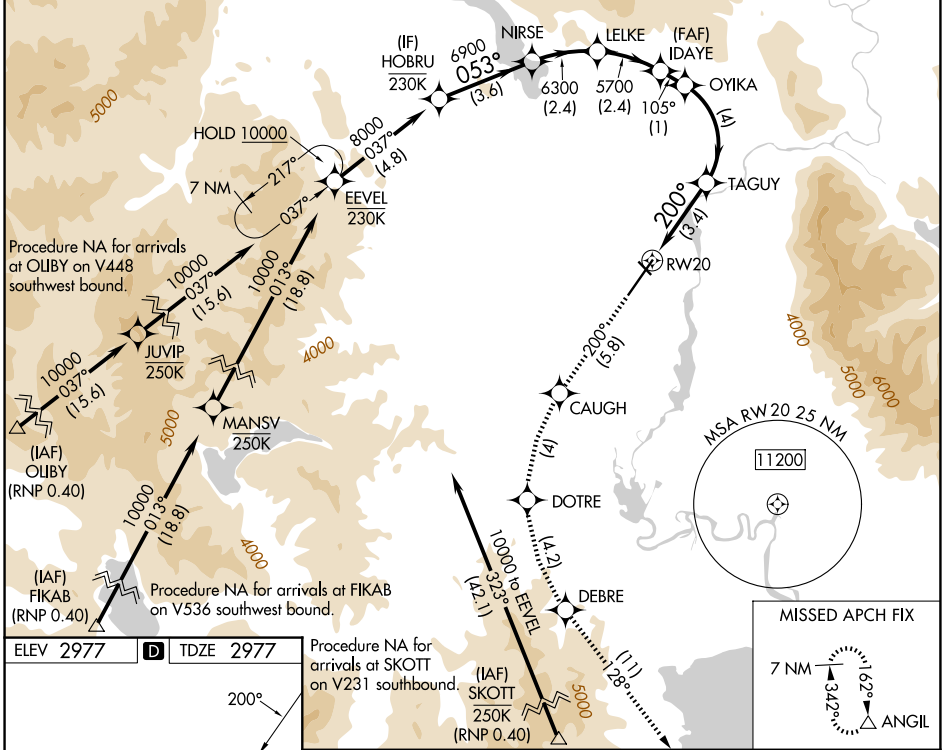
APP CRS	Rwy Ldg	<b>9007</b>
<b>200°</b>	TDZE	<b>2977</b>
	Apt Elev	<b>2977</b>

# RNAV (RNP) RWY 20

GLACIER PARK INTL (GPI)

RNP AR APCH - GPS.	MISSED APPROACH: Climb to 10000 on track 200° to CAUGH, left turn to DOTRE, left turn to DEBRE, and on track 128° to ANGL and hold, continue climb-in-hold to 10000. *Missed approach requires minimum climb of 230 feet per NM to 6800.
-14°C For uncompensated Baro-VNAV systems, procedure NA below -25°C or above 54°C.	

ATIS <b>132.625</b>	SALT LAKE CENTER <b>127.075 244.875</b>	GLACIER TOWER* <b>124.55 (CTAF) 0</b>	GND CON <b>121.6</b>	UNICOM <b>122.95</b>
------------------------	--	--	-------------------------	-------------------------



10000	CAUGH	DOTRE	DEBRE	tr 128°	ANGIL	HOBRU
tr 200°						
	TAGUY	OYIKA	IDAYE	LELKE	NIRSE	8000
	RW20	5777	5700	6300	6900	GP 3.00°
	4100	105°	5700			TCH 45
	3.4 NM	4 NM	1 NM	2.4 NM	2.4 NM	3.6 NM

CATEGORY	A	B	C	D
RNP 0.10 DA*		3346-1	369 (400-1)	
RNP 0.30 DA*		3418-1 3/8	441 (500-1 3/8)	
RNP 0.30 DA		3637-1 7/8	660 (700-1 7/8)	

## AUTHORIZATION REQUIRED

NW-1, 14 MAY 2026 to 11 JUN 2026

NW-1, 14 MAY 2026 to 11 JUN 2026