

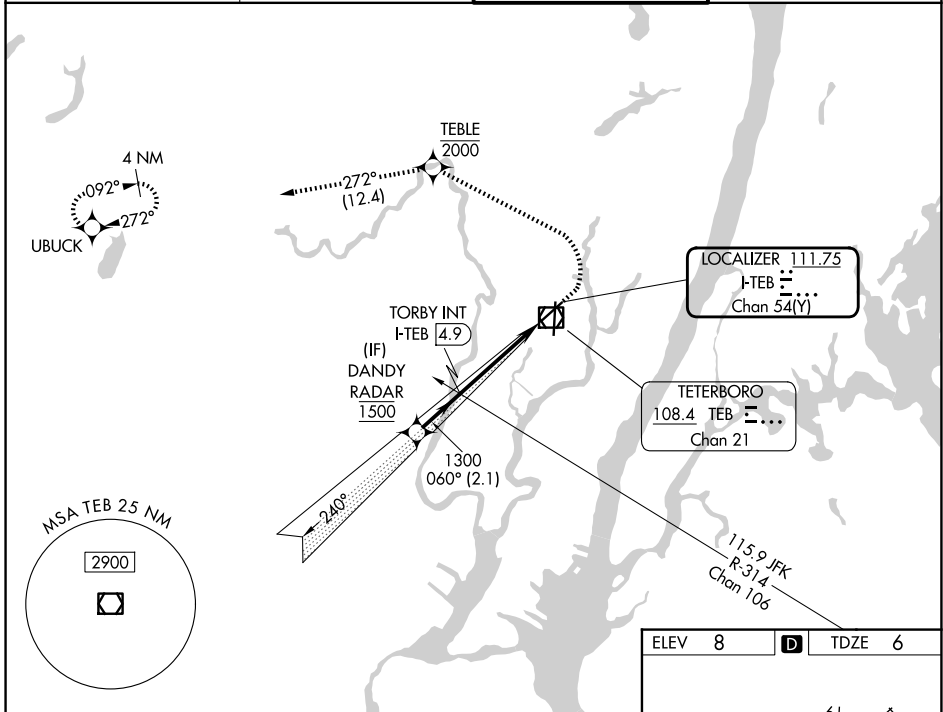
LOC/DME I-TEB <b>111.75</b> Chan <b>54 (Y)</b>	APP CRS <b>060°</b>	Rwy Ldg <b>6014</b> TDZE <b>6</b> Apt Elev <b>8</b>
--	------------------------	---

# COPTER ILS Y or LOC Y RWY 6

TETERBORO (TEB)

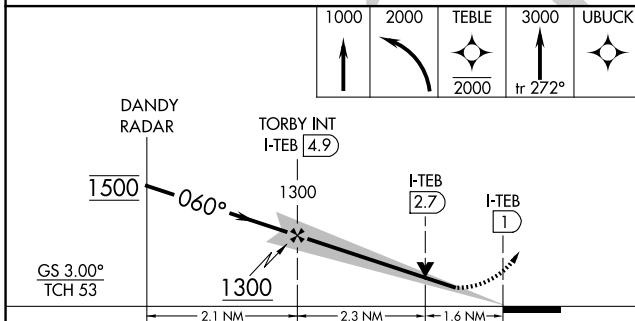
RNP APCH - GPS. RADAR required. ▼ ▲NA	MALSR AS	MISSED APPROACH: Climb to 1000, then climbing left turn to 2000 direct TEBLE, cross TEBLE at or below 2000, then climb to 3000 on track 272° to UBUCK and hold.
--	-------------	---

D-ATIS <b>114.2 132.85</b>	NEWARK APP CON <b>127.6 379.9</b>	TETERBORO TOWER <b>119.5</b>	GND CON <b>121.9</b>
-------------------------------	--------------------------------------	---------------------------------	-------------------------

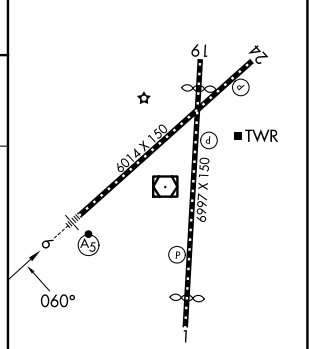


NE-2, 14 MAY 2026 to 11 JUN 2026

NE-2, 14 MAY 2026 to 11 JUN 2026



ELEV 8	D	TDZE 6
--------	---	--------



CATEGORY	COPTER	
H-ILS 6	206/12	200 (200-¼)
H-LOC 6	580/24	574 (600-½)

FAF to MAP 3.9 NM					
Knots	45	60	75	90	105
Min:Sec	5:12	3:54	3:07	2:36	2:14