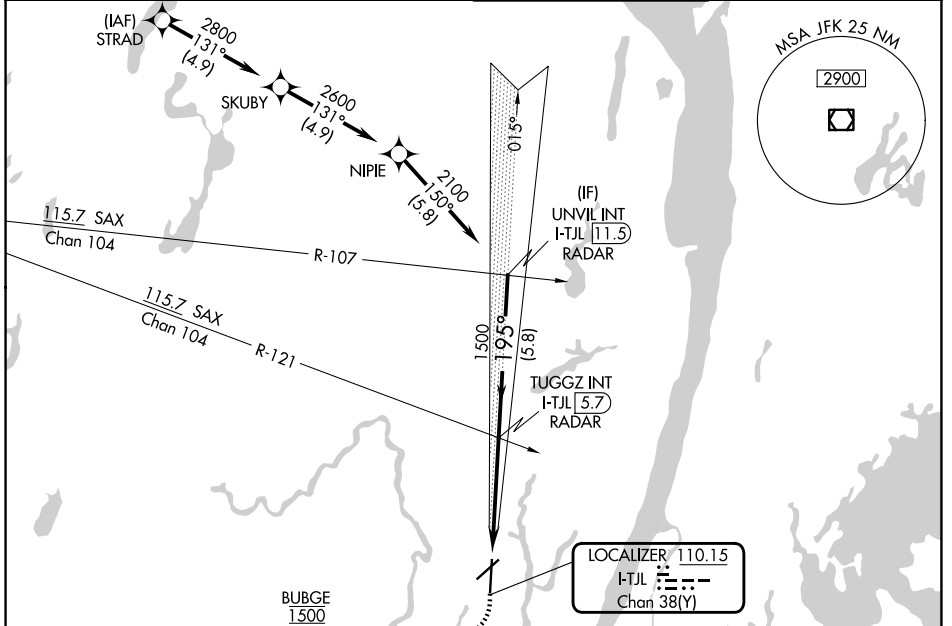


# ILS or LOC RWY 19

TETERBORO (TEB)

LOC/DME I-TJL <b>110.15</b> Chan <b>38</b> (Y)	APP CRS <b>195°</b>	Rwy Ldg TDZE Apt Elev	<b>6230</b> <b>6</b> <b>8</b>
--	------------------------	-----------------------------	-------------------------------------

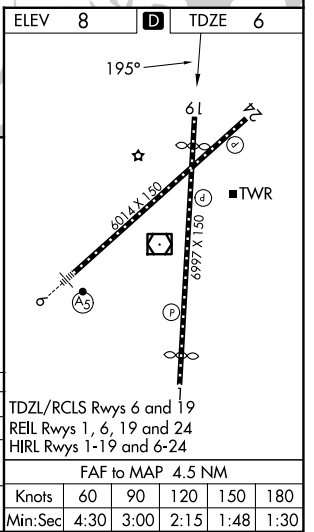
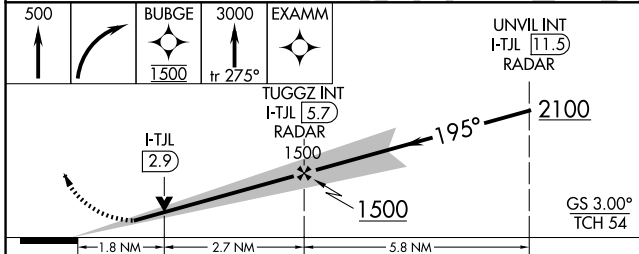
RNP APCH - GPS. RADAR required.		TETERBORO TOWER <b>119.5</b>	
<p>▼ Circling NA for Cats B, C, D northwest of Rwy 6-19. When Circling to Rwy 24 at night, operational VGSI required, remain on or above the VGSI glidepath until threshold.</p>		<p>MISSED APPROACH: Climb to 500 then climbing right turn direct BUBGE, cross BUBGE at 1500, then climb to 3000 on track 275° to EXAMM and hold, continue climb-in-hold to 3000.</p>	
D-ATIS <b>114.2 132.85</b>	NEWARK APP CON <b>127.6 379.9</b>	GND CON <b>121.9</b>	



NE-2, 14 MAY 2026 to 11 JUN 2026

NE-2, 14 MAY 2026 to 11 JUN 2026

500	BUBGE 1500	EXAMM	UNVIL INT I-TJL 11.5 RADAR
↑	tr 275°	★	



CATEGORY	A	B	C	D
S-ILS 19	241-3/4		235 (300-3/4)	
S-LOC 19	640-1 634 (700-1)		640-1 3/4 634 (700-1 3/4)	
CIRCLING	760-1 752 (800-1)		820-2 1/2 1040-3 812 (900-2 1/2) 1032 (1100-3)	