

LOC/DME I-TEB	APP CRS	Rwy Ldg	6014
111.75	060°	TDZE	5
Chan 54(Y)		Apt Elev	8

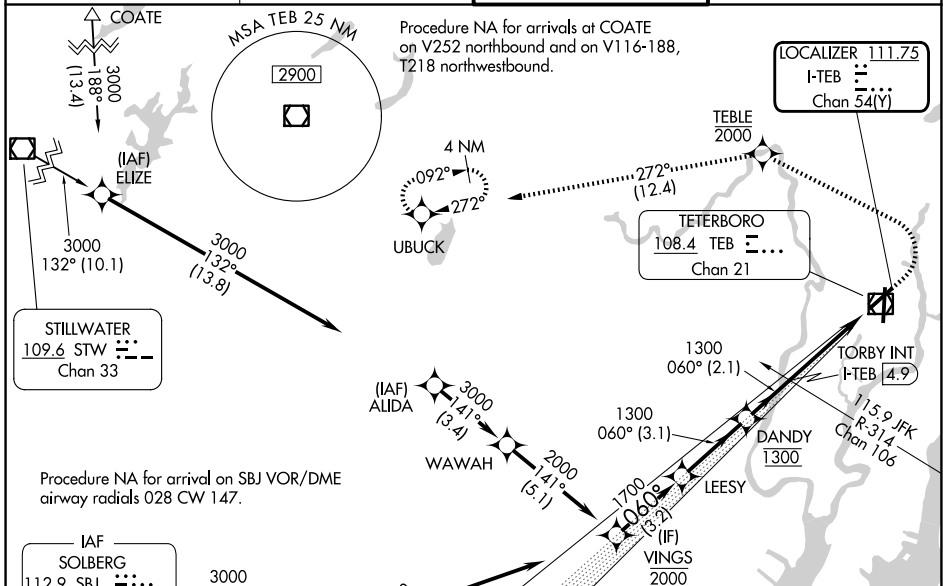
ILS Z or LOC Z RWY 6

TETERBORO (TEB)

RNP APCH - GPS. **MALSR** MISSED APPROACH: Climb to 1000, then climbing left turn to 2000 direct TEBLE, cross TEBLE at or below 2000, then climb to 3000 on track 272° to UBUCK and hold.

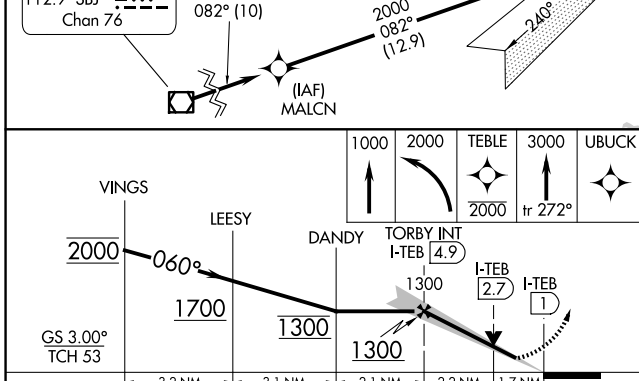
RADAR required. **AS** Rwy 6 helicopter visibility reduction below RVR 4000 NA. Circling NA for Cats B, C and D northwest of Rwy 6 and west of Rwy 19. Inop table does not apply to S-ILS-6 all Cats. When Circling to Rwy 24 at night, operational VGS1 required, remain on or above VGS1 glidepath until threshold. For inop ALS, increase S-LOC 6 Cats A/B visibility to RVR 5500.

D-ATIS 114.2 132.85	NEWARK APP CON 127.6 379.9	TETERBORO TOWER 119.5	GND CON 121.9
-------------------------------	--------------------------------------	---------------------------------	-------------------------

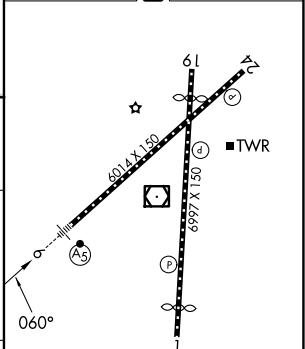


NE-2, 14 MAY 2026 to 11 JUN 2026

NE-2, 14 MAY 2026 to 11 JUN 2026



ELEV 8	D	TDZE 5
--------	---	--------



CATEGORY	A	B	C	D
S-ILS 6		255/40	250 (300-¾)	
S-LOC 6	600/40	595 (600-¾)	600-1¼	595 (600-1¼)
CIRCLING	760-1	752 (800-1)	820-2½ 812 (900-2½)	1040-3 1032 (1100-3)

TDZL/RCLS Rws 6 and 19				
REIL Rws 1, 6, 19 and 24				
HIRL Rws 1-19 and 6-24				
FAF to MAP 3.9 NM				
Knots	60	90	120	150 180
Min:Sec	3:54	2:36	1:57	1:34 1:18