

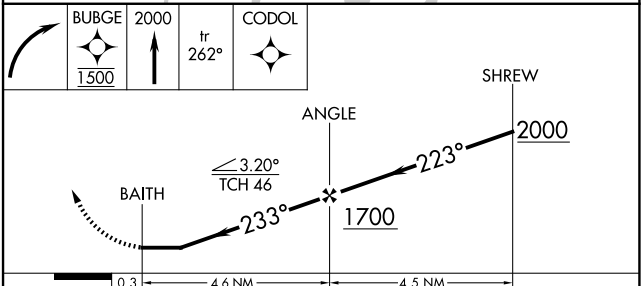
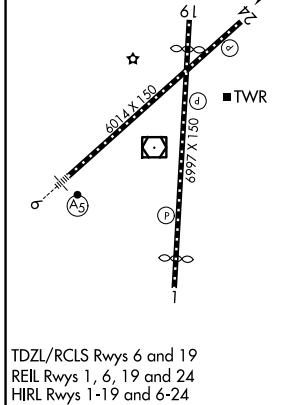
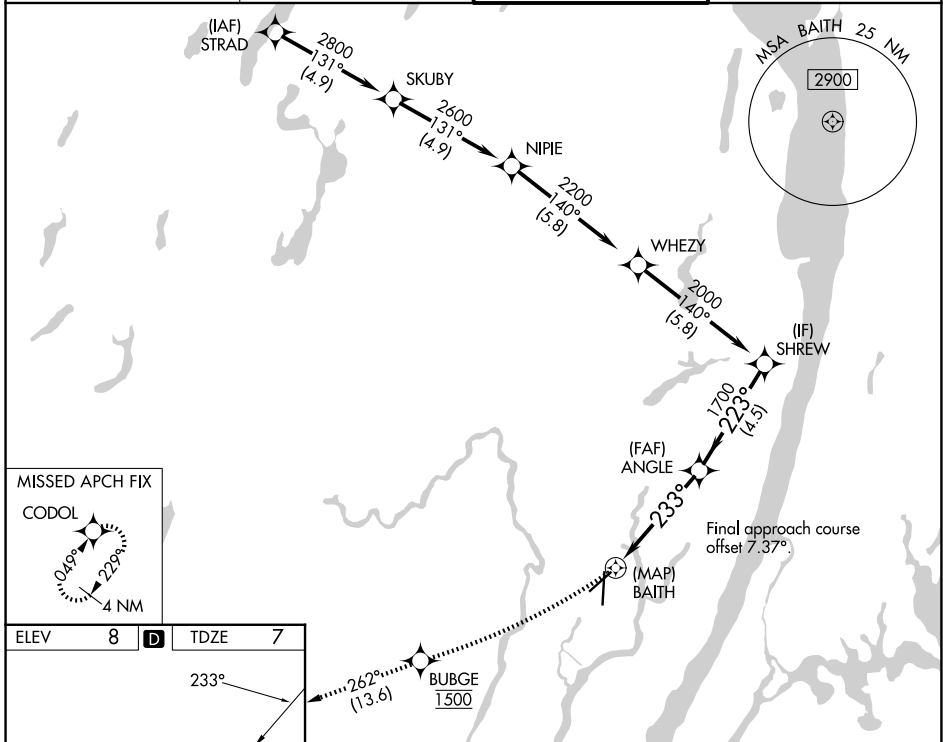
APP CRS	Rwy Ldg	6014
233°	TDZE	7
	Apt Elev	8

RNAV (GPS) RWY 24

TETERBORO (TEB)

RNP APCH. RADAR required.		MISSED APPROACH: Climbing right turn direct BUBGE, cross BUBGE at 1500 then climb to 2000 on track 262° to CODOL and hold.
<p>⚠ Circling NA for Cats B, C, D northwest of Rwy 6-19. Rwy 24 helicopter visibility reduction below 1 NA. Straight-in Rwy 24 at night and when Circling to Rwy 24 at night, operational VGSI required, remain on or above the VGSI glidepath until threshold.</p>		

D-ATIS 114.2 132.85	NEWARK APP CON 127.6 379.9	TETERBORO TOWER 119.5	GND CON 121.9
-------------------------------	--------------------------------------	---------------------------------	-------------------------



CATEGORY	A	B	C	D
LNAV MDA	580-1	573 (600-1)	580-1½	573 (600-1½)
CIRCLING	760-1	752 (800-1)	820-2½ 812 (900-2½)	1040-3 1032 (1100-3)

NE-2, 14 MAY 2026 to 11 JUN 2026

NE-2, 14 MAY 2026 to 11 JUN 2026