

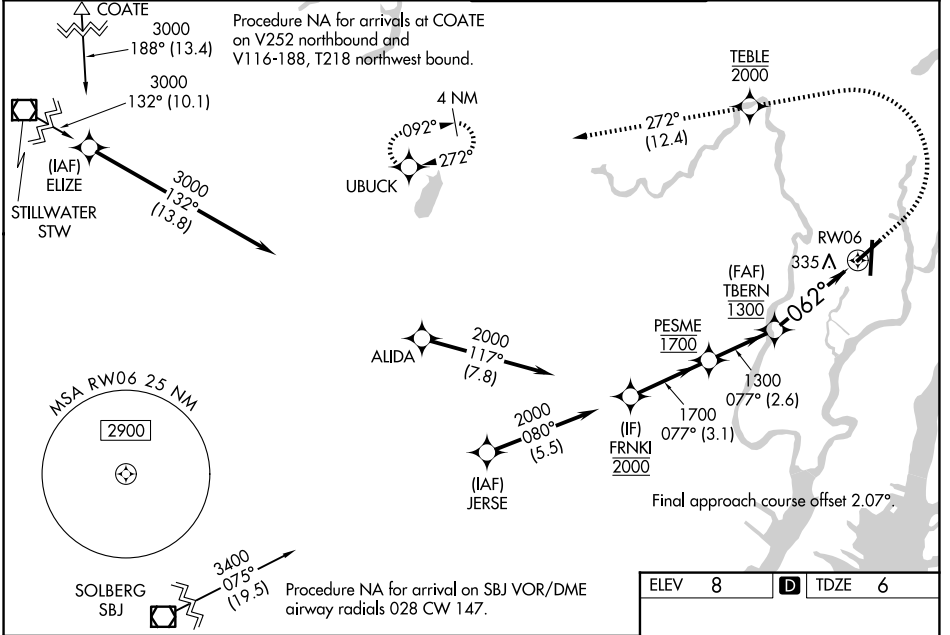
WAAS CH 65634 W06B	APP CRS 062°	Rwy Ldg TDZE Apt Elev	6014 6 8
--	------------------------	-----------------------------	-------------------------------------

RNAV (GPS) X RWY 6

TETERBORO (TEB)

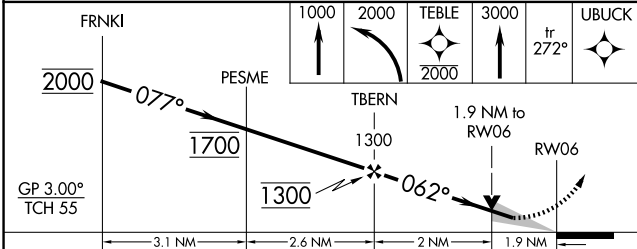
RNP APCH - GPS. RADAR required.	MALSR 	MISSED APPROACH: Climb to 1000, then climbing left turn to 2000 direct TEBLE, cross TEBLE at or below 2000, then climb to 3000 on track 272° to UBUCK and hold.
<p>▼ Circling NA for Cats B, C and D northwest of Rwys 6 and 19. For uncompensated Baro-VNAV systems, LNAV/VNAV NA below -13°C or above 54°C. For inop ALS, increase LPV all Cats visibility to 1½ SM, and LNAV/VNAV all Cats visibility to 1¾ SM. When Circling to Rwy 24 at night, operational VGSI required, remain on or above the VGSI glidepath until threshold.</p>		

D-ATIS 114.2 132.85	NEWARK APP CON 127.6 379.9	TETERBORO TOWER 119.5	GND CON 121.9
-------------------------------	--------------------------------------	---------------------------------	-------------------------

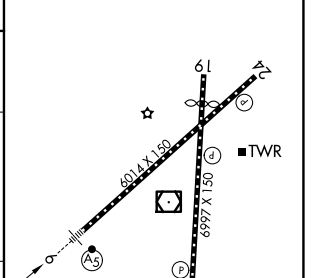


NE-2, 14 MAY 2026 to 11 JUN 2026

NE-2, 14 MAY 2026 to 11 JUN 2026



ELEV 8	D TDZE 6
--------	-----------------



CATEGORY	A	B	C	D
LPV DA		459/45	453 (500-7/8)	
LNAV/VNAV DA		672-1½	666 (700-1½)	
LNAV MDA	660/24	654 (700-½)	660-1¾	654 (700-1¾)
CIRCLING	760-1	752 (800-1)	820-2½ 812 (900-2½)	1040-3 1032 (1100-3)

TDZL/RCLS Rws 6 and 19
HIRL Rws 1-19 and 6-24
REIL Rws 1, 6, 19 and 24