

WAAS CH 65707 W06A	APP CRS 060°	Rwy Ldg TDZE Apt Elev	6014 5 8
--	------------------------	-----------------------------	-------------------------------------

RNAV (GPS) Y RWY 6

TETERBORO (TEB)

RNP APCH - GPS.

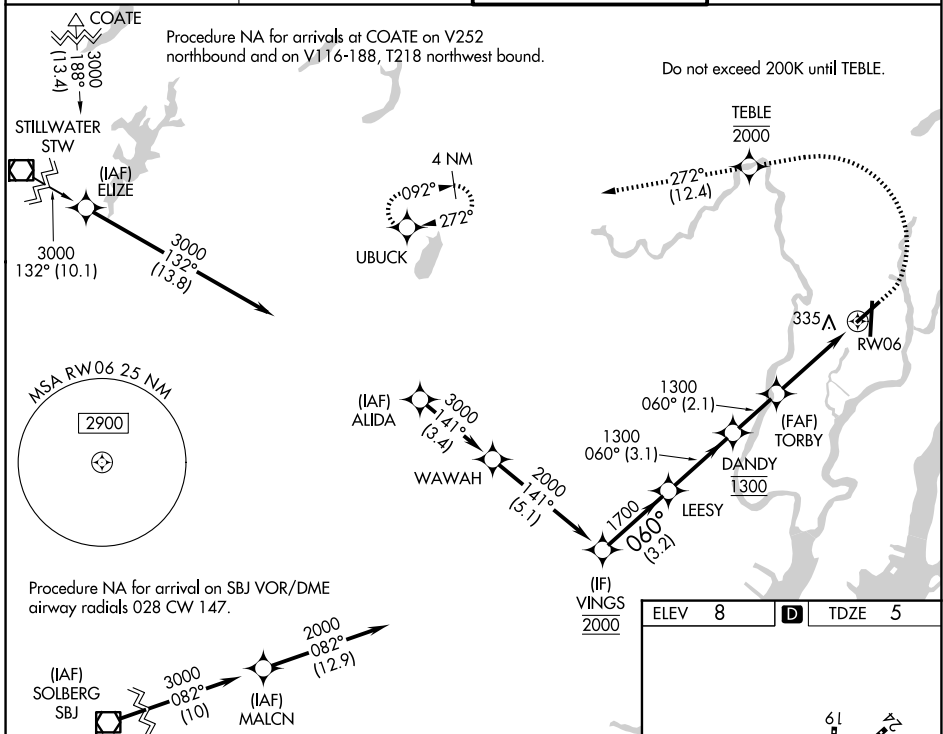
▼ Rwy 6 helicopter visibility reduction below RVR 4000 NA. Circling NA for Cats B, C, and D northwest of Rwy 6 and west of Rwy 19. Inop table does not apply to LPV all Cats. When Circling to Rwy 24 at night, operational VGS1 required, remain on or above VGS1 glidepath until threshold. For inop ALS, increase LNAV Cat A visibility to RVR 5500, Cats C and D visibility to 2½ SM.

MALSRL



MISSED APPROACH: Climb to 1000, then climbing left turn to 2000 direct TEBLE, cross TEBLE at or below 2000, then climb to 3000 on track 272° to UBUCK and hold.

D-ATIS 114.2 132.85	NEWARK APP CON 127.6 379.9	TETERBORO TOWER 119.5	GND CON 121.9
-------------------------------	--------------------------------------	---------------------------------	-------------------------

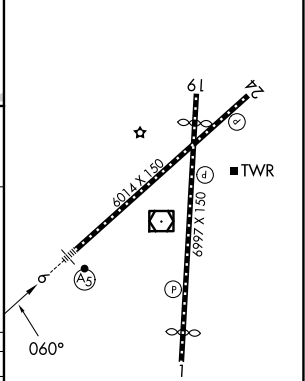


NE-2, 14 MAY 2026 to 11 JUN 2026

NE-2, 14 MAY 2026 to 11 JUN 2026

ELEV 8	D TDZE 5
--------	-----------------

VINGS	LEESY	DANDY	TORBY	UBUCK
2000	1700	1300	1300	2000
GP 3.00° TCH 53				tr 272°
3.2 NM	3.1 NM	2.1 NM	1.6 NM	2.3 NM
CATEGORY A	B	C	D	
LPV DA	255/40	250 (300-¾)		
LNAV MDA	800/40	795 (800-¾)	800-1¾	795 (800-1¾)
CIRCLING	800-1 792 (800-1)	800-1¼ 792 (800-1¼)	820-2½ 812 (900-2½)	1040-3 1032 (1100-3)



TDZL/RCLS Rws 6 and 19
HIRL Rws 1-19 and 6-24
REIL Rws 1, 6, 19 and 24