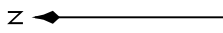


WILKES-BARRE FIVE ARRIVAL

TETERBORO, NEW JERSEY

NEWARK APP CON
127.6 379.9
CDW ATIS
135.5
MMU ATIS
124.25
TEB D-ATIS
114.2 132.85



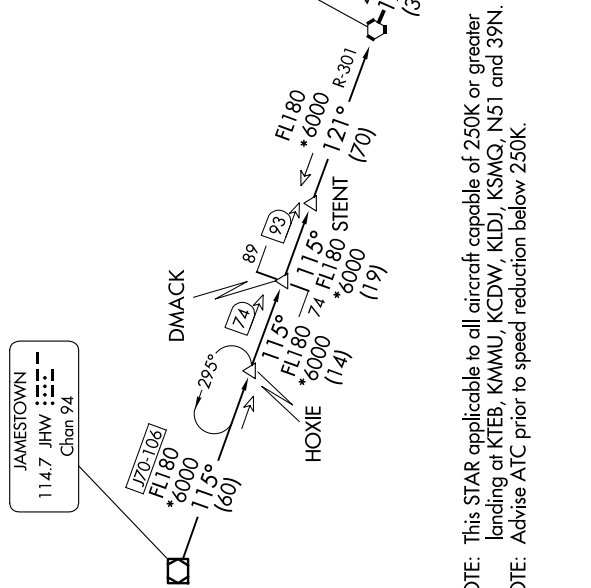
JAMESTOWN
114.7 JHW
Chan 94

WILKES-BARRE
111.6 LVZ
Chan 53
Expect FL180

SPARTA
115.7 SAX
Chan 104

STILLWATER
109.6 STW
Chan 33

- ESSEX COUNTY
- TETERBORO
- MORRISTOWN MUNI
- LINDEN
- SOMERSET
- SOLBERG/HUNTERDON
- PRINCETON



NOTE: This STAR applicable to all aircraft capable of 250K or greater landing at KTEB, KMMU, KCDW, KLDJ, KSMG, N51 and 39N.
 NOTE: Advise ATC prior to speed reduction below 250K.

ARRIVAL ROUTE DESCRIPTION

JAMESTOWN TRANSITION (JHW.LVZ5): From over JHW VOR/DME on JHW R-115 and LVZ R-301 to LVZ VORTAC. Thence....

....From over LVZ VORTAC, on LVZ R-124 and STW R-305 to STW VOR/DME. Expect RADAR vectors to final approach course.

NOTE: Chart not to scale.

NE-2, 14 MAY 2026 to 11 JUN 2026

NE-2, 14 MAY 2026 to 11 JUN 2026

WILKES-BARRE FIVE ARRIVAL

TETERBORO, NEW JERSEY