

LOC I-MIV <b>110.9</b>	APP CRS <b>100°</b>	Rwy Idg TDZE Apt Elev	<b>6003</b> <b>74</b> <b>85</b>
---------------------------	------------------------	-----------------------------	---------------------------------------

# ILS or LOC RWY 10

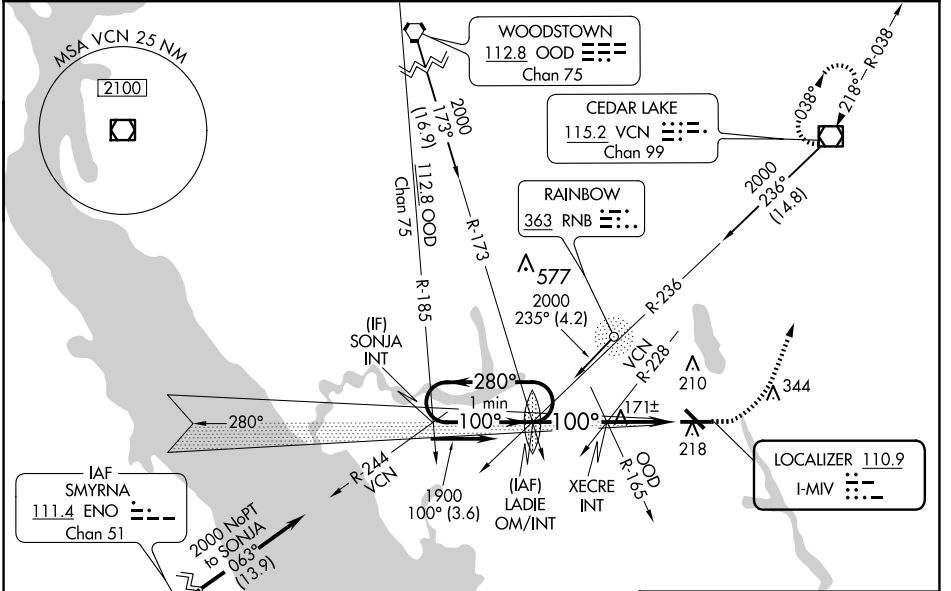
MILLVILLE MUNI (MIV)

**⚠** Inoperative table does not apply. Rwy 10 helicopter visibility reduction below 3/4 SM NA. When local altimeter setting not received, use Atlantic City altimeter setting: increase DA to 407 feet; increase all MDAs 60 feet and visibility Cat B 1/2 SM and Cats C and D 1/2 SM. Autopilot coupled approach NA below 300 MSL.

**MALSR**

**MISSED APPROACH:** Climb to 550 then climbing left turn to 2000 direct VCN VOR/DME and hold.

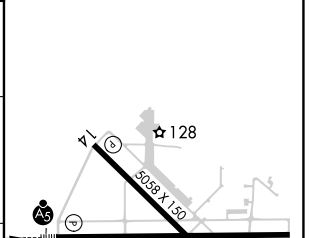
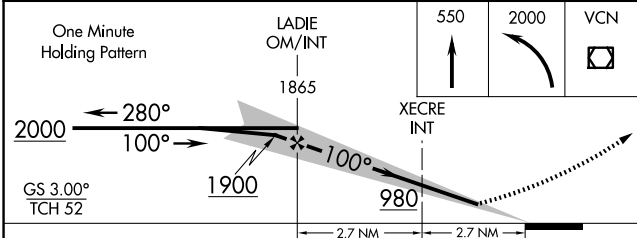
ASOS <b>119.6</b>	ATLANTIC CITY APP CON <b>124.6 327.125</b>	UNICOM <b>123.0 (CTAF)</b>
----------------------	-----------------------------------------------	-------------------------------



NE-2, 14 MAY 2026 to 11 JUN 2026

NE-2, 14 MAY 2026 to 11 JUN 2026

ELEV 85	TDZE 74
---------	---------



CATEGORY	A	B	C	D
S-ILS 10	347-1 273 (300-1)			
S-LOC 10	980-1 1/4	906 (900-1 1/4)	980-2 1/2	906 (900-2 1/2)
CIRCLING	980-1 1/4	895 (900-1 1/4)	980-2 3/4 895 (900-2 3/4)	980-3 895 (900-3)
XECRE FIX MINIMUMS (DUAL VOR RECEIVERS REQUIRED)				
S-LOC 10	440-1 366 (400-1)			
CIRCLING	520-1 435 (500-1)	580-1 495 (500-1)	660-1 1/2 575 (600-1 1/2)	660-2 575 (600-2)

MIRL Rwy 10-28 and 14-32

FAF to MAP 5.4 NM

Knots	60	90	120	150	180
Min:Sec	5:24	3:36	2:42	2:10	1:48