

(LEEAH6.LEEAH) 25219

# LEEAH SIX DEPARTURE

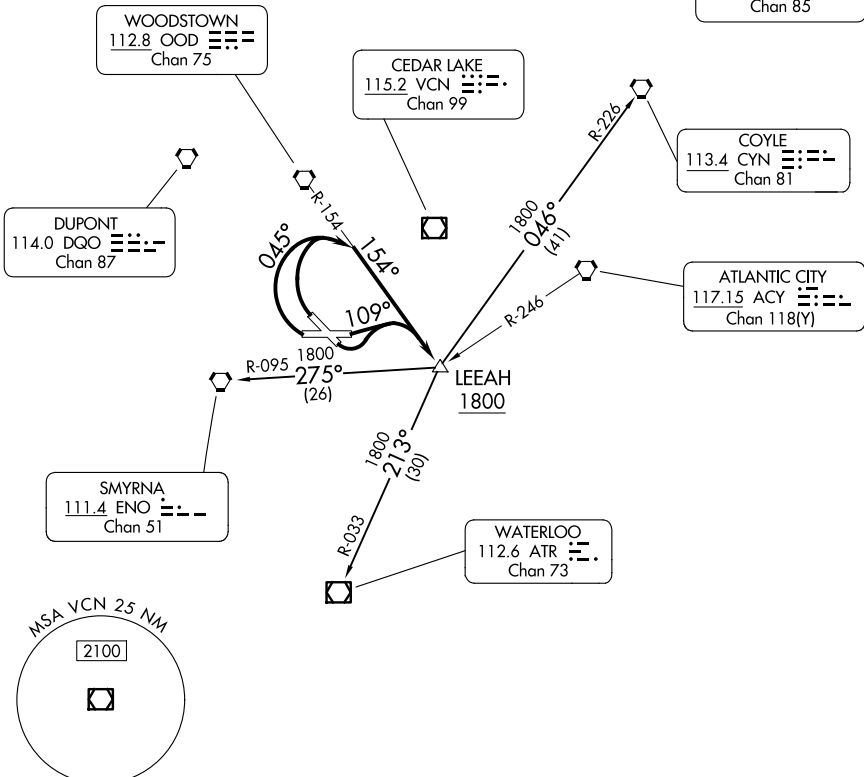
AL-891 (FAA)

MILLVILLE MUNI (MIV)  
MILLVILLE, NEW JERSEY

ATLANTIC CITY DEP CON  
124.6 327.125  
ASOS 119.6  
CTAF 123.0

**TOP ALTITUDE:  
1800**

RADAR required.



NE-2, 14 MAY 2026 to 11 JUN 2026

NE-2, 14 MAY 2026 to 11 JUN 2026

NOTE: Chart not to scale.

TAKE-OFF MINIMUMS:  
Rwys 10, 14, 28, 32: Standard.

## DEPARTURE ROUTE DESCRIPTION

TAKEOFF RUNWAYS 28, 32: Turn right heading 045° and OOD R-154 to LEEAH INT, thence....

TAKEOFF RUNWAYS 10, 14: Turn left heading 109° and OOD R-154 to LEEAH INT, thence....

....Then on transition. Maintain 1800, expect filed altitude 10 minutes after departure.

COYLE TRANSITION (LEEAH6.CYN): From over LEEAH INT via CYN R-226 to CYN VORTAC.

SMYRNA TRANSITION (LEEAH6.ENO): From over LEEAH INT via ENO R-095 to ENO VORTAC.

WATERLOO TRANSITION (LEEAH6.ATR): From over LEEAH INT via ATR R-033 to ATR VOR/DME.

# LEEAH SIX DEPARTURE

(LEEAH6.LEEAH) 07AUG25

MILLVILLE, NEW JERSEY  
MILLVILLE MUNI (MIV)