

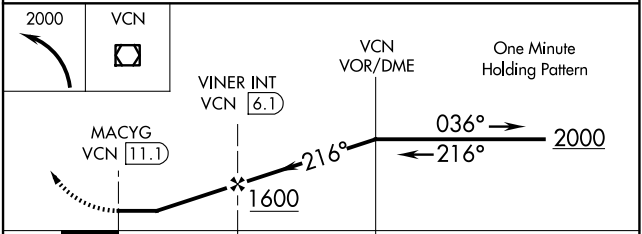
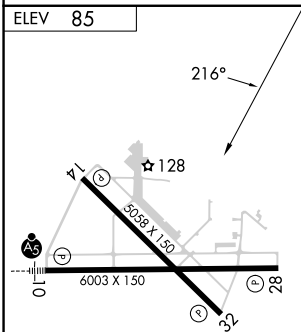
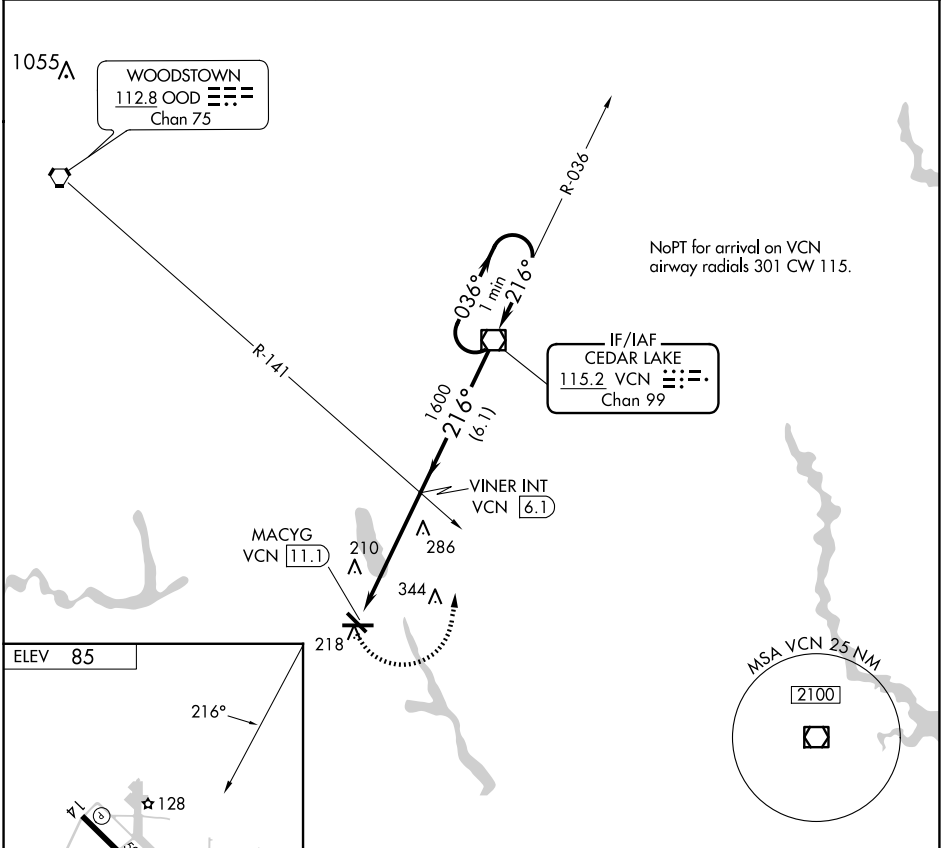
VOR/DME VCN <b>115.2</b> Chan <b>99</b>	APP CRS <b>216°</b>	Rwy Idg TDZE Apt Elev	<b>N/A</b> <b>N/A</b> <b>85</b>
---	------------------------	-----------------------------	---------------------------------------

**VOR-A**  
MILLVILLE MUNI (MIV)

**▼** When local altimeter setting not received, use Atlantic City altimeter setting and increase all MDAs 60 feet and visibility Circling Cat C ¼ SM.

**MISSED APPROACH:** Climbing left turn to 2000 direct VCN VOR/DME and hold.

ASOS <b>119.6</b>	ATLANTIC CITY APP CON <b>124.6 327.125</b>	UNICOM <b>123.0 (CTAF) 0</b>
----------------------	---	---------------------------------



MIRL Rwy 10-28 and 14-32  $\bullet$

FAF to MAP 5.1 NM					
Knots	60	90	120	150	180
Min:Sec	5:06	3:24	2:33	2:02	1:42

CATEGORY	A	B	C	D
CIRCLING	600-1	515 (600-1)	660-1½ 575 (600-1½)	660-2 575 (600-2)