


LOC I-VLD 110.9	APP CRS 356°	Rwy Ldg 8002
		TDZE 200
		Apr Elev 203

ILS or LOC RWY 36

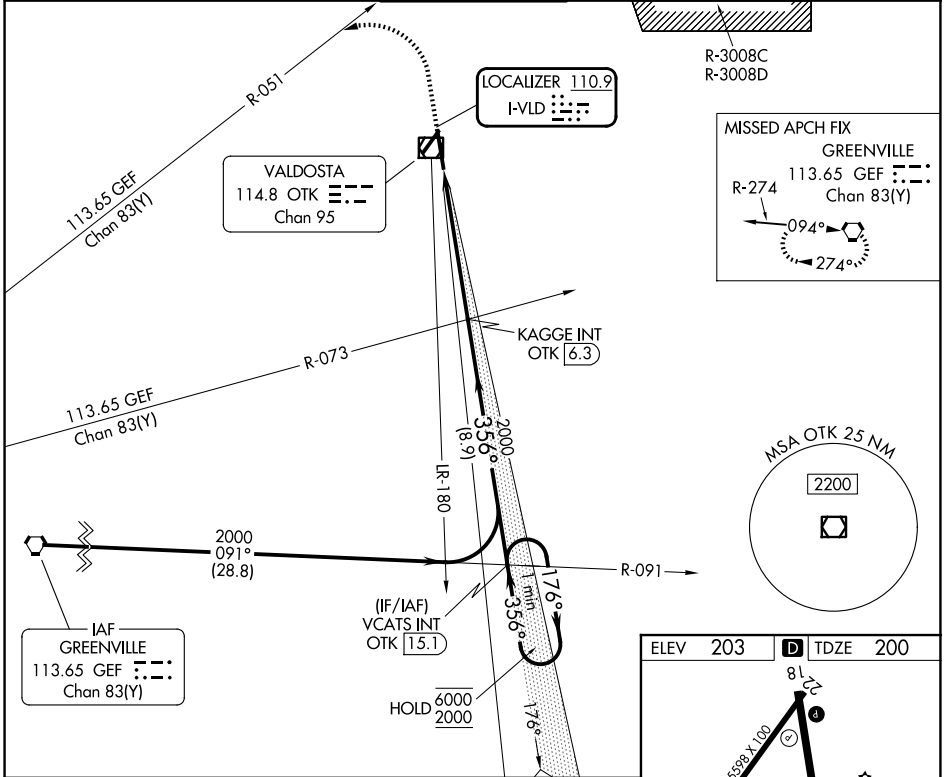
VALDOSTA RGNL (VLD)

⚠ Rwy 36 helicopter visibility reduction below 3/4 SM NA. DME from OTK VOR/DME. DME use requires simultaneous reception of I-VLD and OTK DME. For inop ALS, increase S-ILS 36 all Cats visibility to 3/8 SM, increase S-LOC 36 Cats A and B visibility to 1 SM and Cat E visibility to 1/4 SM.

MALSR 

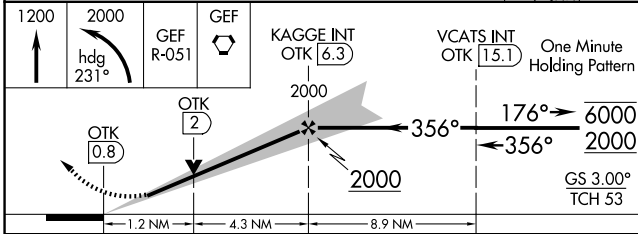
MISSED APPROACH: Climb to 1200 then climbing left turn to 2000 on heading 231° and GEF R-051 to GEF VORTAC and hold.

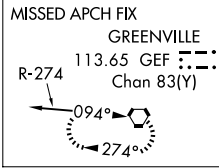
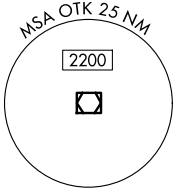
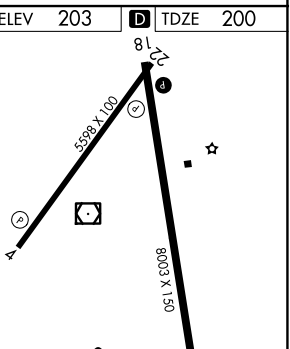
ASOS 126.225	VALDOSTA APP CON * 126.6 285.6	VALDOSTA TOWER * 128.35 (CTAF)	GND CON 121.7	UNICOM 122.95
------------------------	--	--	-------------------------	-------------------------



SE-4, 14 MAY 2026 to 11 JUN 2026

SE-4, 14 MAY 2026 to 11 JUN 2026



ELEV	203	TDZE	200
			
			
			
REIL Rwy 18	1		
HIRL Rwy 18-36	1		
REIL Rwys 4 and 22	1		
MIRL Rwys 4-22	1		
FAF to MAP 5.5 NM			
Knots	60	90	120 150 180
Min:Sec	5:30	3:40	2:45 2:12 1:50