

VOR/DME OTK <b>114.8</b> Chan <b>95</b>	APP CRS <b>338°</b>	Rwy Ldg <b>8002</b> TDZE <b>201</b> Apt Elev <b>203</b>
---	------------------------	---

# VOR RWY 36

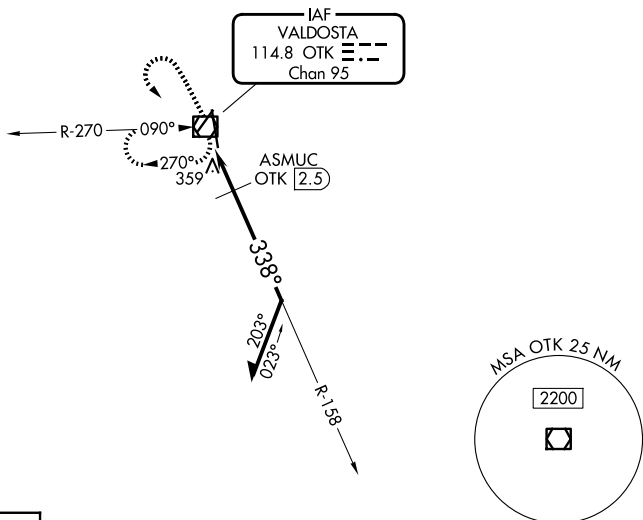
VALDOSTA RGNL (VLD)

**⚠** Rwy 36 helicopter visibility reduction below 1 SM NA. For inop ALS, increase S-36 Cats C and D visibility to 1½ SM. ASMUC fix minimums: increase S-36 C and D visibility to 1½ SM. Circling Rwy 4 and 22 NA at night. Inop table does not apply to S-36 Cats A and B and ASMUC fix minimums: Cat A and B. Straight-in and Circling Rwy 36 NA at night.

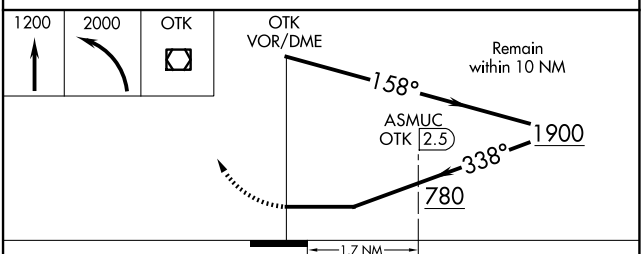
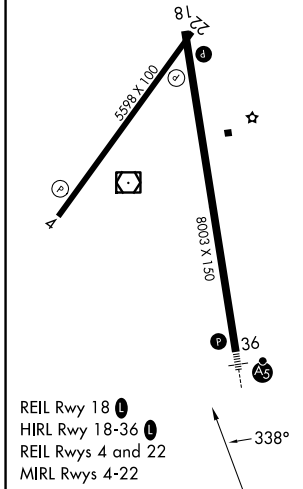
**MALSR**

**MISSED APPROACH:** Climb to 1200 then climbing left turn to 2000 direct OTK VOR/DME and hold, continue climb-in-hold to 2000.

ASOS <b>126.225</b>	VALDOSTA APP CON * <b>126.6 285.6</b>	VALDOSTA TOWER * <b>128.35 (CTAF) 0</b>	GND CON <b>121.7</b>	UNICOM <b>122.95</b>
------------------------	--	--	-------------------------	-------------------------



ELEV 203	<b>D</b>	TDZE 201
----------	----------	----------



CATEGORY	A	B	C	D
S-36	780-1	579 (600-1)	780-1¼	579 (600-1¼)
CIRCLING	780-1	577 (600-1)	900-2 697 (700-2)	1020-2¾ 817 (900-2¾)
ASMUC FIX MINIMUMS				
S-36	620-1 419 (500-1)			
CIRCLING	660-1 457 (500-1)	700-1 497 (500-1)	900-2 697 (700-2)	1020-2¾ 817 (900-2¾)

SE-4, 14 MAY 2026 to 11 JUN 2026

SE-4, 14 MAY 2026 to 11 JUN 2026