


# ILS or LOC RWY 32

SMYRNA (MQY)

LOC I-MQY <b>111.1</b>	APP CRS <b>321°</b>	Rwy Ldg TDZE Apt Elev	<b>8038</b> <b>518</b> <b>543</b>
---------------------------	------------------------	-----------------------------	---

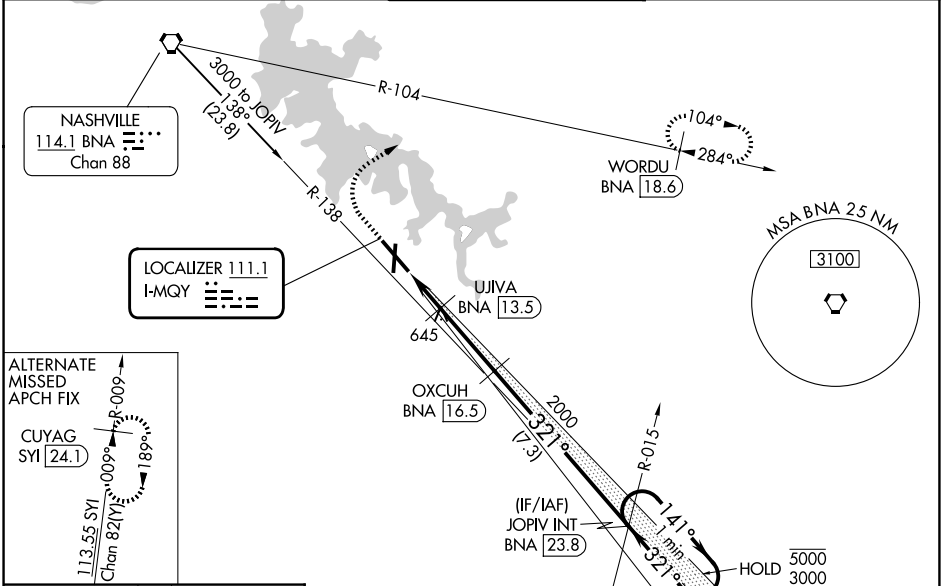
DME required.

**NA** Circling Rwy 14 NA at night. DME from BNA VORTAC, simultaneous reception of I-MQY and BNA DME required. For Inop ALS, increase S-LOC 32 Cats C/D visibility to 1 SM.

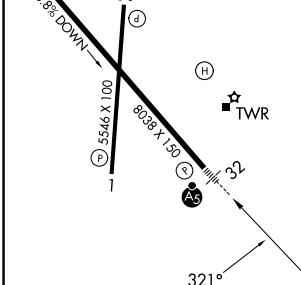
**MALSR** 

**MISSED APPROACH:** Climb to 1500 then climbing right turn to 3000 on heading 060° and on BNA VORTAC R-104 to WORDU/ BNA 18.6 DME and hold.

AWOS-3PT <b>119.125</b>	NASHVILLE APP CON <b>118.4 360.7</b>	SMYRNA TOWER ★ <b>118.5 (CTAF) 0 233.1</b>	GND CON <b>121.4</b>	UNICOM <b>122.95</b>
----------------------------	---	---	-------------------------	-------------------------



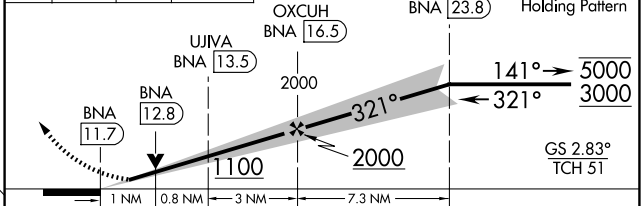
ELEV 543	TDZE 518
----------	----------






1500 3000 hdg 060°

BNA R-104 WORDU BNA 18.6

VGSI and ILS glidepath not coincident (VGSI Angle 3.00/TCH 57).



CATEGORY	A	B	C	D
S-ILS 32	718-1/2 200 (200-1/2)			
S-LOC 32	900-1/2 382 (400-1/2)	900-5/8 382 (400-5/8)		
CIRCLING	1100-1 557 (600-1)	1180-1 637 (700-1)	1260-2 717 (800-2)	1480-3 937 (1000-3)

REIL Rwy 14   
 HIRL Rwy 14-32   
 MIRL Rwy 1-19   
 REIL Rwy 1, 19, and 32

SE-1, 14 MAY 2026 to 11 JUN 2026

SE-1, 14 MAY 2026 to 11 JUN 2026