

WAAS CH 42932 W19A	APP CRS 190°	Rwy Ldg TDZE Apt Elev	5546 521 543
----------------------------------------	------------------------	-----------------------------	-----------------------------------------

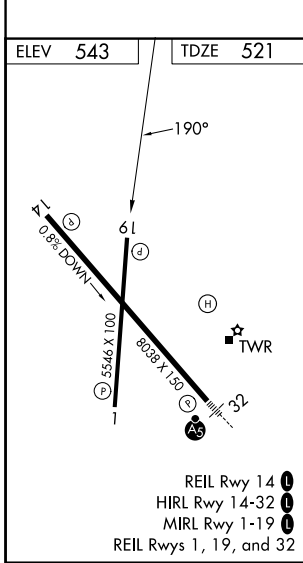
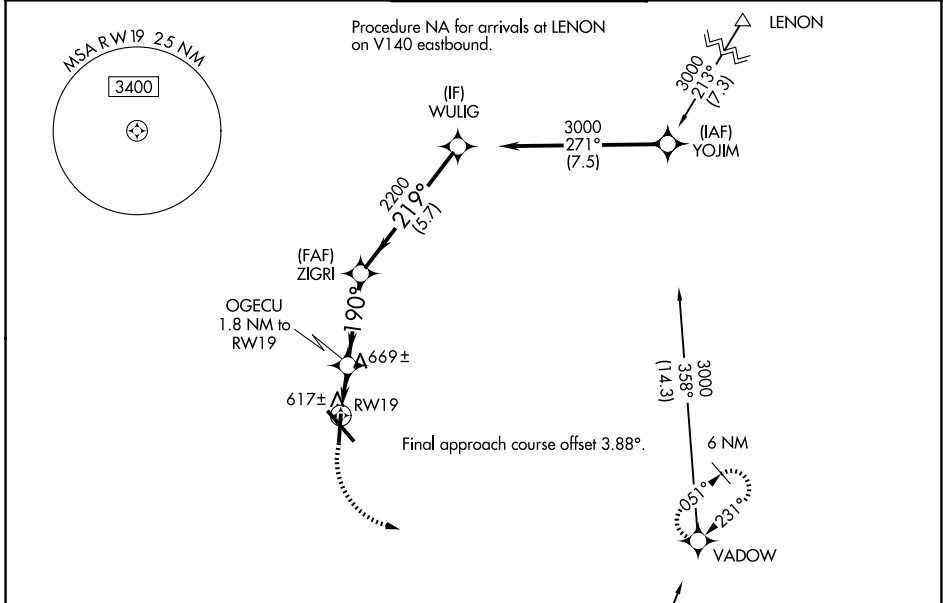
RNAV (GPS) RWY 19

SMYRNA (MQY)

⚠ DME/DME RNP-0.3 NA. Helicopter visibility reduction below 3/4 SM NA.
 When local altimeter setting not received, use Nashville Intl altimeter setting and increase all MDA 40 feet and increase LP and LNAV Cat C/D visibility 1/8 mile.

MISSED APPROACH: Climb to 1000 then climbing left turn to 3000 direct VADOW and hold.

AWOS-3PT 119.125	NASHVILLE APP CON 118.4 360.7	SMYRNA TOWER ★ 118.5 (CTAF) 0 233.1	GND CON 121.4	UNICOM 122.95
----------------------------	-----------------------------------------	-----------------------------------------------	-------------------------	-------------------------



1000	3000	VADOW	VGSIs and descent angles not coincident (VGSi Angle 3.00/TCH 45).		WULIG
RWY 19		OGECU 1.8 NM to RWY 19	ZIGRI	190°	3000
1140		3.00° TCH 45	2200	219°	
1.8 NM		3.3 NM	5.7 NM		
CATEGORY	A	B	C	D	
LP MDA	880-1 359 (400-1)				
LNAV MDA	920-1	399 (400-1)	920-1 1/8	399 (400-1 1/8)	
CIRCLING	1100-1 557 (600-1)	1200-1 657 (700-1)	1240-2 697 (700-2)	1480-3 937 (1000-3)	

RNAV (GPS) RWY 19

SE-1, 14 MAY 2026 to 11 JUN 2026

SE-1, 14 MAY 2026 to 11 JUN 2026