

WAAS CH 93533 W14A	APP CRS 133°	Rwy Ldg TDZE Apt Elev	6501 1095 1095
--	------------------------	-----------------------------	---

RNAV (GPS) RWY 14

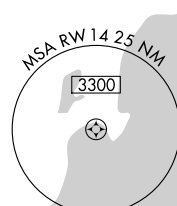
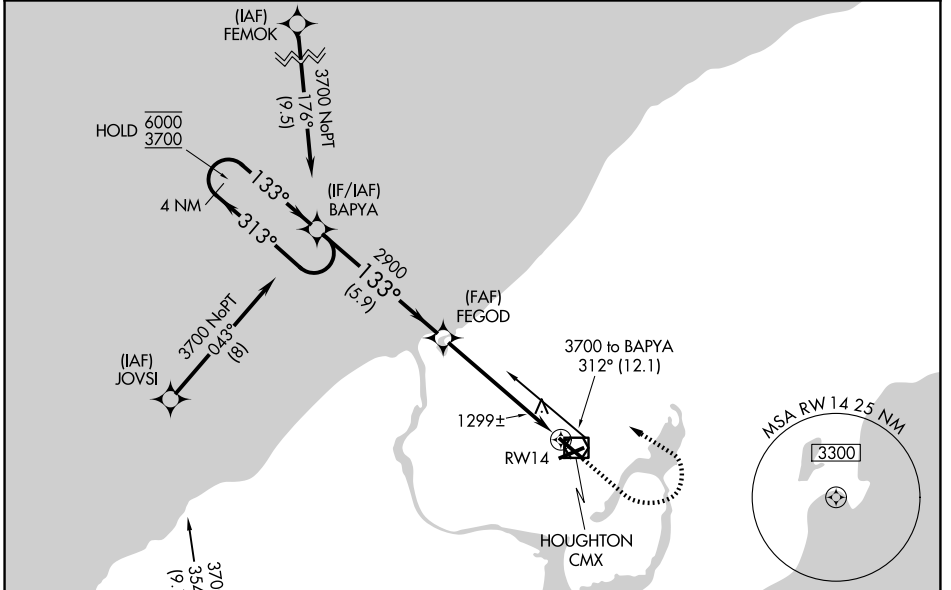
HOUGHTON COUNTY MEML (CMX)

RNP APCH - GPS.

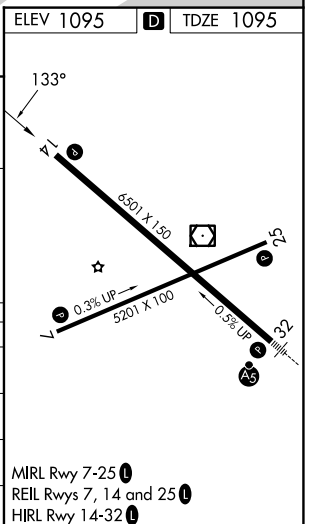
⚠ Rwy 14 helicopter visibility reduction below 3/4 SM NA.
For uncompensated Baro-VNAV systems,
LNAV/VNAV NA below -21°C or above 54°C.

MISSED APPROACH: Climb to 2400 then climbing left turn to 3700 direct BAPYA and hold.

ASOS 125.675	MINNEAPOLIS CENTER 133.55 379.1	UNICOM 122.7 (CTAF)
------------------------	---	-------------------------------



4 NM Holding Pattern					VGSI and RNAV glidepath not coincident (VGSI Angle 3.00/TCH 43).				
BAPYA					FEGOD				
6000 3700					2400 3700 BAPYA				
GP 3.00° TCH 46					1.3 NM to RWY 14				
← 313°					133°				
← 133°					133°				
5.9 NM					4.2 NM				
1.3 NM					1.3 NM				
CATEGORY	A	B	C	D	A	B	C	D	
LPV DA		1414-7/8	319 (400-7/8)						
LNAV/VNAV DA		1626-1 1/2	531 (600-1 1/2)						
LNAV MDA	1560-1	465 (500-1)	1560-1 3/8	465 (500-1 3/8)					
CIRCLING	1620-1 525 (600-1)	1660-1 565 (600-1)	1700-1 3/4 605 (700-1 3/4)	1820-2 1/4 725 (800-2 1/4)					



MIRL Rwy 7-25
REIL Rws 7, 14 and 25
HIRL Rwy 14-32

EC-1, 14 MAY 2026 to 11 JUN 2026

EC-1, 14 MAY 2026 to 11 JUN 2026