

WAAS CH <b>86634</b> <b>W25A</b>	APP CRS <b>249°</b>	Rwy Ldg TDZE Apt Elev	<b>5201</b> <b>1075</b> <b>1095</b>
--	------------------------	-----------------------------	---

# RNAV (GPS) RWY 25

HOUGHTON COUNTY MEML (CMX)

RNP APCH.

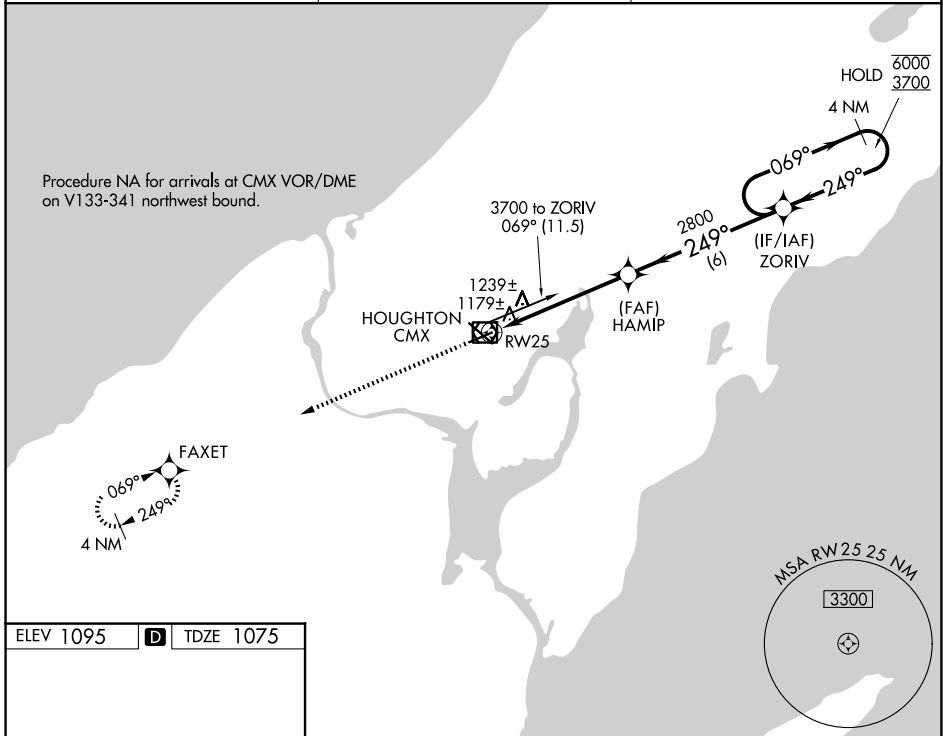
**⚠** Rwy 25 helicopter visibility reduction below ¾ SM NA.

MISSED APPROACH: Climb to 3700 direct FAXET and hold.

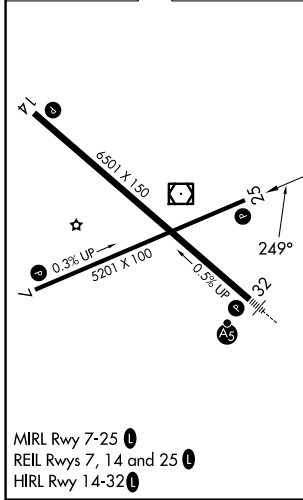
ASOS  
**125.675**

MINNEAPOLIS CENTER  
**133.55 379.1**

UNICOM  
**122.7 (CTAF) 0**



ELEV 1095	<b>D</b>	TDZE 1075
-----------	----------	-----------



3700	FAXET	VGSIs and descent angles not coincident (VGSIs Angle 3.00/TCH 41).		4 NM Holding Pattern
		HAMIP	ZORIV	
		1 NM to RW25	2800	6000 3700
		3.00° TCH 45	249°	069°
		1 NM	4.3 NM	6 NM
CATEGORY	A	B	C	D
LP MDA	1440-1		365 (400-1)	
LNAV MDA	1500-1	425 (500-1)	1500-1¼	425 (500-1¼)
CIRCLING	1620-1 525 (600-1)	1660-1 565 (600-1)	1700-1¾ 605 (700-1¾)	1820-2¼ 725 (800-2¼)

EC-1, 14 MAY 2026 to 11 JUN 2026

EC-1, 14 MAY 2026 to 11 JUN 2026