

| | | | |
|--|------------------------|-----------------------------|---|
| WAAS CH 65905 W24A | APP CRS 244° | Rwy Ldg TDZE Apt Elev | 6802 560 569 |
|--|------------------------|-----------------------------|---|

RNAV (GPS) RWY 24

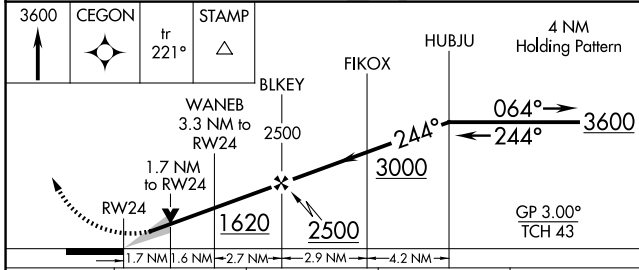
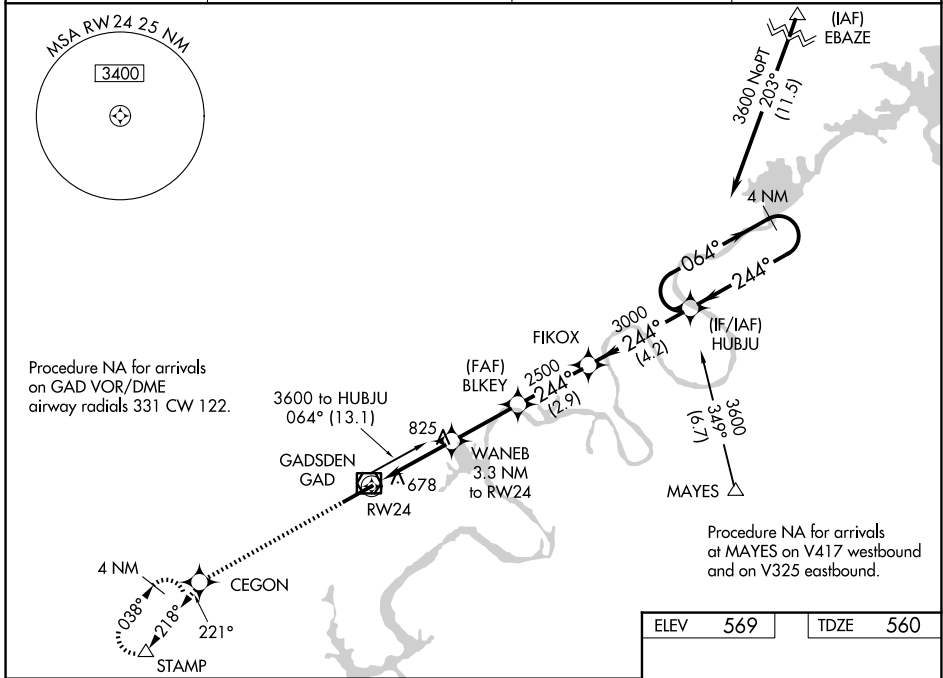
NORTHEAST ALABAMA RGNL (GAD)

RNP APCH-GPS.

▼ For uncompensated Baro-VNAV systems, LNAV/VNAV NA below -16°C or above 54°C.
 ▲ When local altimeter setting is not received, use Annisson altimeter setting and increase LPV DA to 847 feet and all visibilities 1/8 SM; increase LNAV/VNAV DA to 1082 feet and all visibilities 1/8 SM; increase all MDAs 80 feet and LNAV visibility Cat C/D 1/4 SM, and Circling visibility Cat C 1/2 SM. Baro-VNAV and VDP NA when using Annisson altimeter setting.

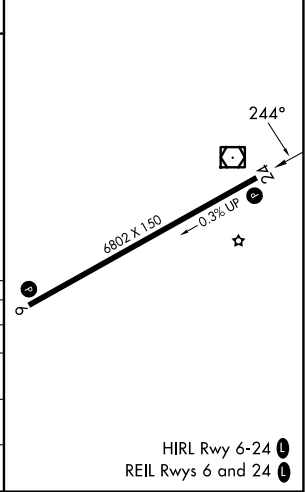
MISSED APPROACH: Climb to 3600 direct CEGON and on track 221° to STAMP and hold, continue climb-in-hold to 3600.

| | | | |
|----------------------------|--|---------------------------------|-----------------------------------|
| AWOS-3PT 127.825 | BIRMINGHAM APP CON 125.45 279.65 | CLNC DEL 120.05 257.7 | UNICOM 122.725 (CTAF) 0 |
|----------------------------|--|---------------------------------|-----------------------------------|



| | | | |
|------|-----|------|-----|
| ELEV | 569 | TDZE | 560 |
|------|-----|------|-----|

| CATEGORY | A | B | C | D |
|--------------|--------|-------------|-------------------------------|-------------------------|
| LPV DA | | 781-3/4 | 221 (300-3/4) | |
| LNAV/VNAV DA | | 1016-13/8 | 456 (500-13/8) | |
| LNAV MDA | 1140-1 | 580 (600-1) | 1140-15/8 | 580 (600-13/8) |
| CIRCLING | 1140-1 | 571 (600-1) | 1440-2 1/2 871 (900-2 1/2) | 1680-3 1111 (1200-3) |



SE-4, 14 MAY 2026 to 11 JUN 2026

SE-4, 14 MAY 2026 to 11 JUN 2026