

WAAS CH <b>65706</b> <b>W06A</b>	APP CRS <b>064°</b>	Rwy Ldg TDZE <b>569</b> Apt Elev <b>569</b>	<b>6802</b>
--	------------------------	---	-------------

# RNAV (GPS) RWY 6

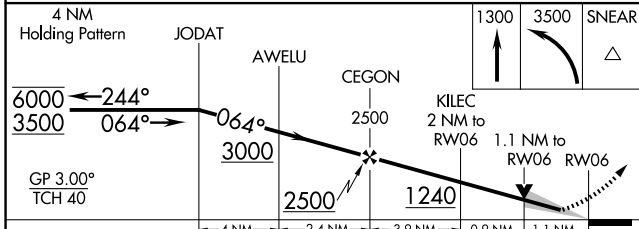
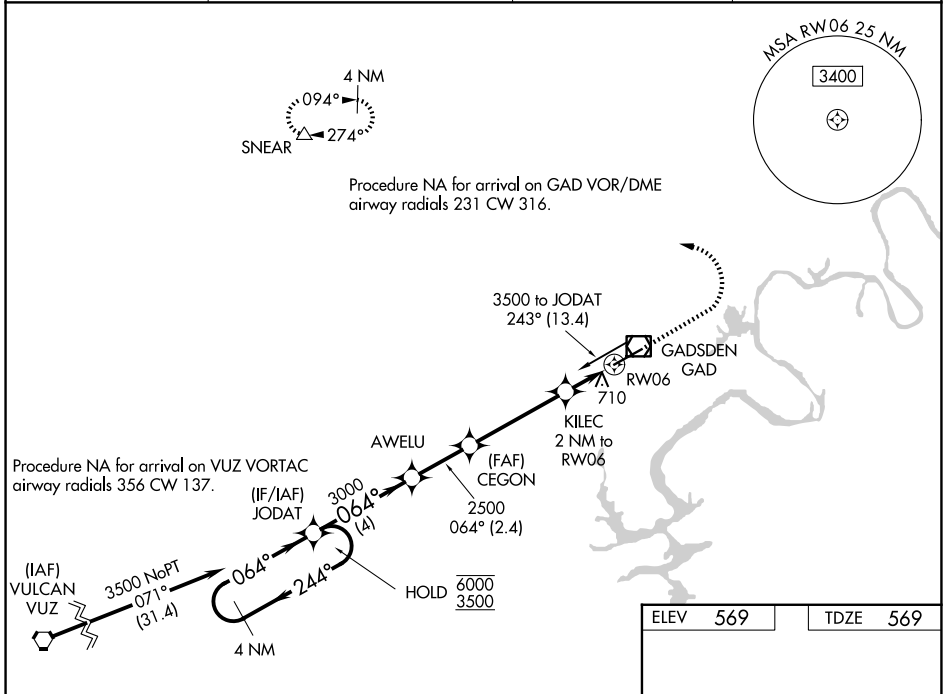
NORTHEAST ALABAMA RGNL (GAD)

RNP APCH-GPS.

**⚠** Baro-VNAV and VDP NA when using Anniston altimeter setting. For uncompensated Baro-VNAV systems, LNAV/VNAV NA below -1.6°C or above 54°C. When local altimeter not received, use Anniston altimeter setting and increase LPV DA to 835, LNAV/VNAV DA to 1040 and all MDA 80 feet; increase LPV all Cats visibility 1/8 SM, LNAV/VNAV all Cats 1/4 SM and increase LNAV Cats C/D and Circling Cat C visibility 1/4 SM.

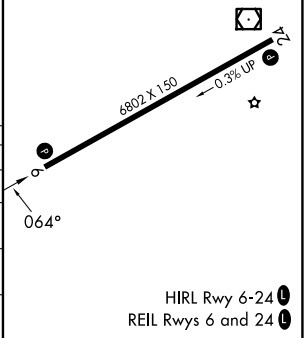
**⚠** MISSED APPROACH: Climb to 1300 then climbing left turn to 3500 direct SNEAR and hold.

AWOS-3PT <b>127.825</b>	BIRMINGHAM APP CON <b>125.45 279.65</b>	CLNC DEL <b>120.05 257.7</b>	UNICOM <b>122.725 (CTAF) 0</b>
----------------------------	--	---------------------------------	-----------------------------------



ELEV	569	TDZE	569
------	-----	------	-----

CATEGORY	A		B		C		D	
	LPV	DA	LPV	DA	LPV	DA	LPV	DA
LPV DA			769-3/4		200 (200-3/4)			
LNAV/VNAV DA			960-1 1/8		391 (400-1 1/8)			
LNAV MDA	960-1	391 (400-1)	960-1 1/8	391 (400-1 1/8)				
CIRCLING	1100-1	531 (600-1)	1440-2 1/2	871 (900-2 1/2)	1680-3	1111 (1200-3)		



SE-4, 14 MAY 2026 to 11 JUN 2026

SE-4, 14 MAY 2026 to 11 JUN 2026