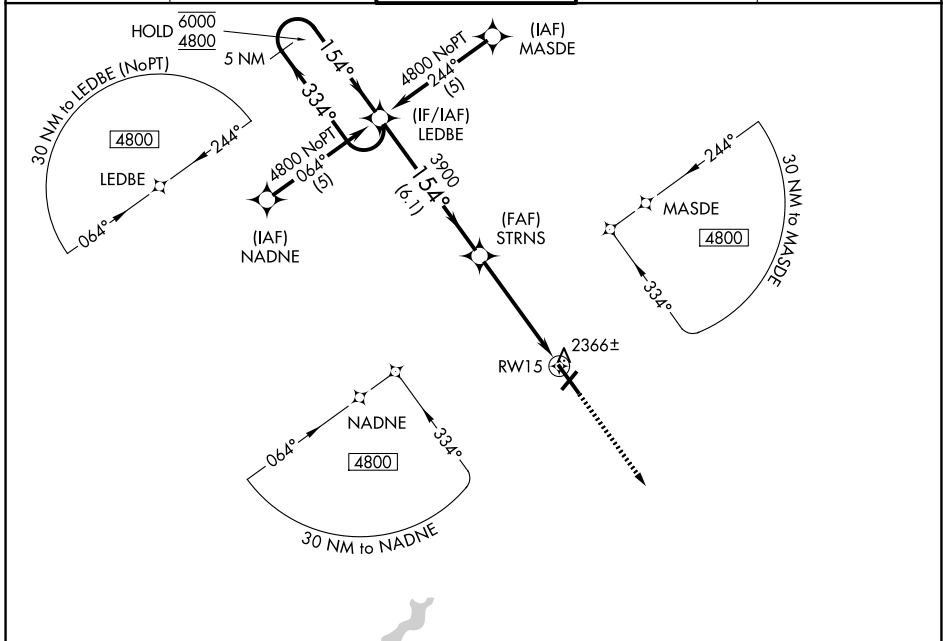


WAAS CH <b>53513</b> <b>W15A</b>	APP CRS <b>154°</b>	Rwy Ldg TDZE Apt Elev	<b>6698</b> <b>2276</b> <b>2284</b>
--	------------------------	-----------------------------	---

# RNAV (GPS) RWY 15

JOHN MURTHA JOHNSTOWN/CAMBRIA COUNTY (JST)

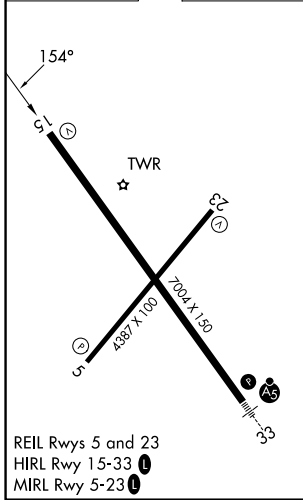
RNP APCH - GPS.		MISSED APPROACH: Climb to 4900 direct COTSO and hold.	
Baro-VNAV NA.			
ATIS <b>118.325</b>	JOHNSTOWN APP CON ★ <b>121.2 299.2</b>	JOHNSTOWN TOWER ★ <b>125.75 (CTAF) 0</b>	GND CON <b>121.6</b>
			UNICOM <b>122.95</b>



NE-4, 14 MAY 2026 to 11 JUN 2026

NE-4, 14 MAY 2026 to 11 JUN 2026

ELEV 2284	<b>D</b>	TDZE 2276
-----------	----------	-----------



REIL Rws 5 and 23  
HIRL Rwy 15-33  
MIRL Rwy 5-23

5 NM Holding Pattern		LEDBE		STRNS		COTSO	
6000 ← 334°		4800 → 154°		3900		4900 COTSO	
GP 3.00° TCH 52		3900		*1.1 NM to RWY15		*LNAV only	
		6.1 NM		3.8 NM		1.1	
CATEGORY	A	B	C	D			
LPV DA	2526-¾				250 (300-¾)		
LNAV/VNAV DA	2595-1				319 (400-1)		
LNAV MDA	2680-1	404 (400-1)	2680-1½ 404 (400-1½)	2680-1¼ 404 (400-1¼)			
CIRCLING	2700-1 416 (500-1)	2880-1 596 (600-1)	2880-1½ 596 (600-1½)	3000-2¼ 716 (800-2¼)			