

WAAS CH 53429 W23A	APP CRS 229°	Rwy Ldg TDZE Apt Elev	4387 2284 2284
--	------------------------	-----------------------------	---

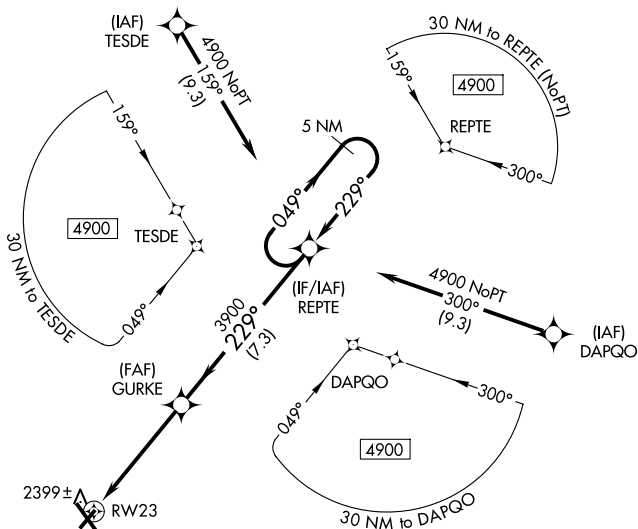
RNAV (GPS) RWY 23

JOHN MURTHA JOHNSTOWN/CAMBRIA COUNTY (JST)

⚠ For uncompensated Baro-VNAV systems, LNAV/VNAV NA below -19°C (-2°F) or above 29°C (84°F). When local altimeter setting not received, procedure NA. DME/DME RNP-0.3 NA. Rwy 23 helicopter visibility reduction below ¾ SM NA.

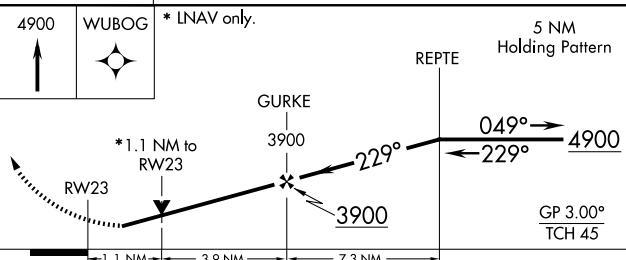
MISSED APPROACH: Climb to 4900 direct WUBOG and hold.

ATIS 118.325	JOHNSTOWN APP CON ★ 121.2 299.2	JOHNSTOWN TOWER ★ 125.75 (CTAF) 0	GND CON 121.6	UNICOM 122.95
------------------------	---	---	-------------------------	-------------------------

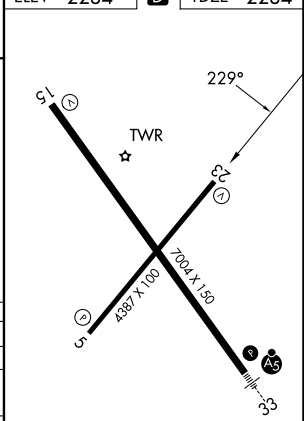


NE-4, 14 MAY 2026 to 11 JUN 2026

NE-4, 14 MAY 2026 to 11 JUN 2026



ELEV 2284	D	TDZE 2284
-----------	----------	-----------



CATEGORY	A	B	C	D
LPV DA		2534-¾	250 (300-¾)	
LNAV/VNAV DA		2584-1	300 (300-1)	
LNAV MDA		2660-1	376 (400-1)	
CIRCLING	2700-1 416 (500-1)	2880-1 596 (600-1)	2880-1½ 596 (600-1½)	3000-2¼ 716 (800-2¼)

REIL Rwy 5 and 23
HIRL Rwy 15-33
MIRL Rwy 5-23