

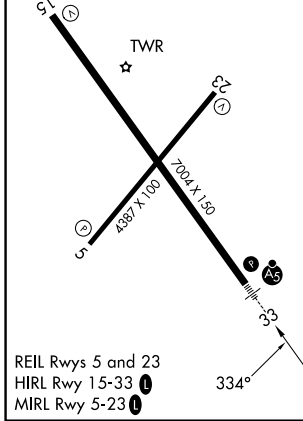
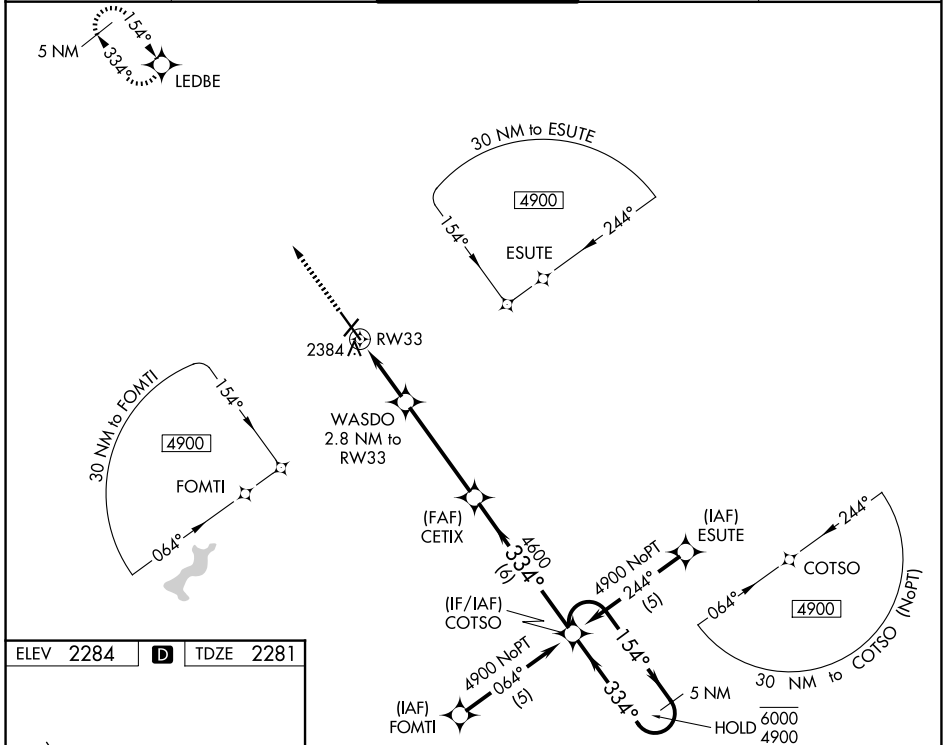
WAAS CH 61113 W33A	APP CRS 334°	Rwy Ldg TDZE Apt Elev	6484 2281 2284
----------------------------------------	------------------------	-----------------------------	-------------------------------------------

RNAV (GPS) RWY 33

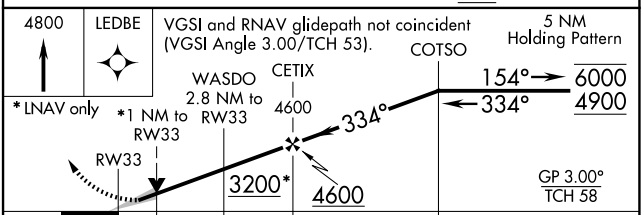
JOHN MURTHA JOHNSTOWN/CAMBRIA COUNTY (JST)

RNP APCH.	MALSR	MISSED APPROACH: Climb to 4800 direct LEDBE and hold.
<p>▼ Inop table does not apply to LNAV Cat D. For uncompensated Baro-VNAV systems, LNAV/VNAV NA below -19°C or above 54°C. For inop ALS increase LNAV/VNAV all Cats visibility to ½ SM and LNAV Cat C visibility to 1 SM.</p> <p>▲</p>		

ATIS 118.325	JOHNSTOWN APP CON * 121.2 299.2	JOHNSTOWN TOWER * 125.75 (CTAF) 0	GND CON 121.6	UNICOM 122.95
------------------------	-------------------------------------------	---------------------------------------------	-------------------------	-------------------------



JOHNSTOWN, PENNSYLVANIA
Amdt 1A 15AUG19



CATEGORY	A	B	C	D
LPV DA	2481-½		200 (200-½)	
LNAV/VNAV DA	2552-½		271 (300-½)	
LNAV MDA	2640-½	359 (400-½)	2640-⅝ 359 (400-⅝)	2640-1 359 (400-1)
CIRCLING	2700-1 416 (500-1)	2880-1 596 (600-1)	2880-1½ 596 (600-½)	3000-2¼ 716 (800-2¼)

JOHN MURTHA JOHNSTOWN/CAMBRIA COUNTY (JST)
40°19'N-78°50'W

RNAV (GPS) RWY 33

NE-4, 14 MAY 2026 to 11 JUN 2026

NE-4, 14 MAY 2026 to 11 JUN 2026