

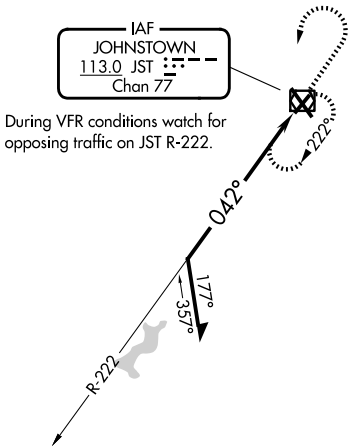
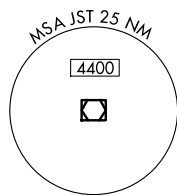
VOR/DME JST 113.0 Chan 77	APP CRS 042°	Rwy Ldg TDZE Apt Elev 4387 2284 2284
--	------------------------	--

VOR RWY 5

JOHN MURTHA JOHNSTOWN/CAMBRIA COUNTY (JST)

▼ ▲ Rwy 5 helicopter visibility reduction below 3/4 SM NA.	MISSED APPROACH: Climb to 4200 then left turn direct JST VOR/DME and hold.
---	--

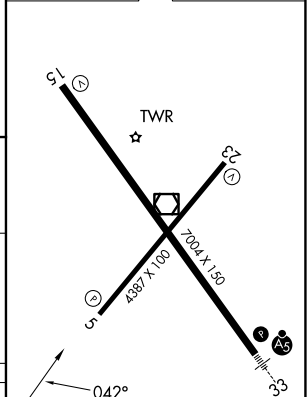
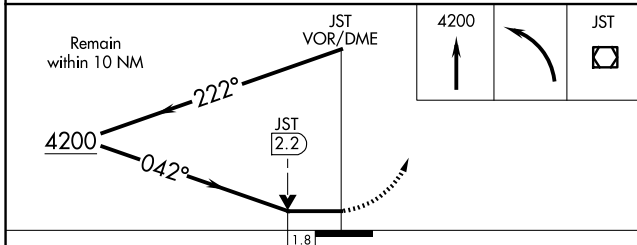
ATIS 118.325	JOHNSTOWN APP CON ★ 121.2 299.2	JOHNSTOWN TOWER ★ 125.75 (CTAF) 0	GND CON 121.6	UNICOM 122.95
------------------------	---	---	-------------------------	-------------------------



NE-4, 14 MAY 2026 to 11 JUN 2026

NE-4, 14 MAY 2026 to 11 JUN 2026

ELEV 2284	D TDZE 2284
-----------	--------------------



CATEGORY	A	B	C	D
S-5	2880-1 596 (600-1)		2880-1 3/4 596 (600-1 3/4)	
CIRCLING	2880-1 596 (600-1)		2880-1 3/4 596 (600-1 3/4)	3000-2 1/4 716 (800-2 1/4)

REIL Rwy 5 and 23
HIRL Rwy 15-33 **1**
MIRL Rwy 5-23 **1**

VOR RWY 5