

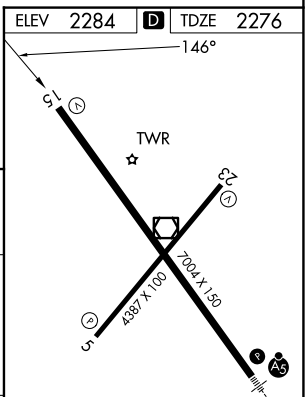
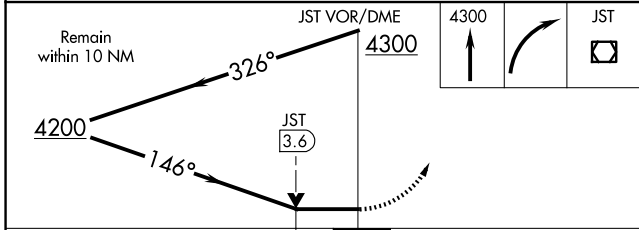
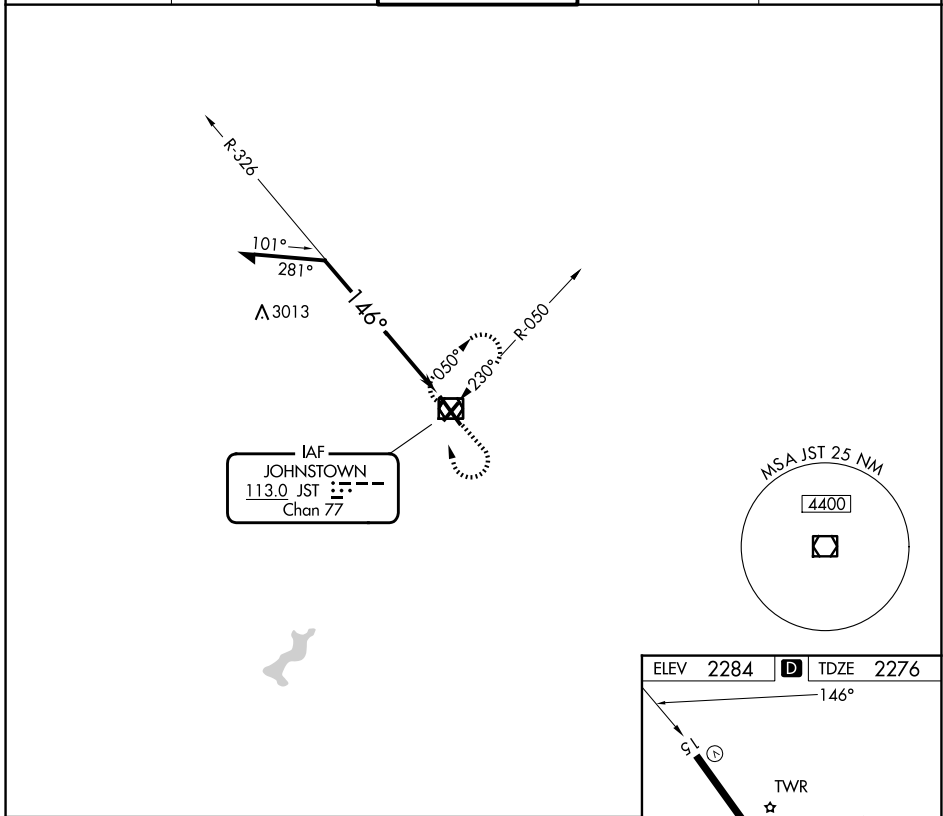
VOR/DME JST 113.0 Chan 77	APP CRS 146°	Rwy Ldg TDZE Apt Elev 6698 2276 2284
--	------------------------	--

VOR Y RWY 15

JOHN MURTHA JOHNSTOWN/CAMBRIA COUNTY (JST)

		MISSED APPROACH: Climb to 4300 then right turn direct JST VOR/DME and hold.		
--	--	---	--	--

ATIS 118.325	JOHNSTOWN APP CON ★ 121.2 299.2	JOHNSTOWN TOWER ★ 125.75 (CTAF) 0	GND CON 121.6	UNICOM 122.95
------------------------	---	---	-------------------------	-------------------------



CATEGORY	A	B	C	D
S-15	3300-1¼ 1024 (1100-1¼)	3300-1½ 1024 (1100-1½)	3300-3	1024 (1100-3)
CIRCLING	3300-1¼ 1016 (1100-1¼)	3300-1½ 1016 (1100-1½)	3300-3	1016 (1100-3)

REIL Rwy 5 and 23
HIRL Rwy 15-33 0
MIRL Rwy 5-23 0

VOR Y RWY 15

NE-4, 14 MAY 2026 to 11 JUN 2026

NE-4, 14 MAY 2026 to 11 JUN 2026