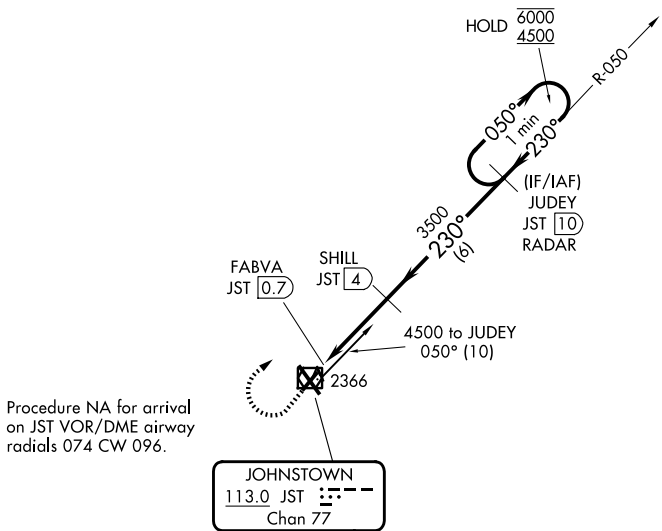


VOR/DME JST <b>113.0</b> Chan <b>77</b>	APP CRS <b>230°</b>	Rwy Ldg TDZE <b>4387</b> <b>2284</b>	Apt Elev <b>2284</b>
---	------------------------	--	-------------------------

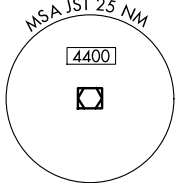
# VOR Z RWY 23

JOHN MURTHA JOHNSTOWN/CAMBRIA COUNTY (JST)

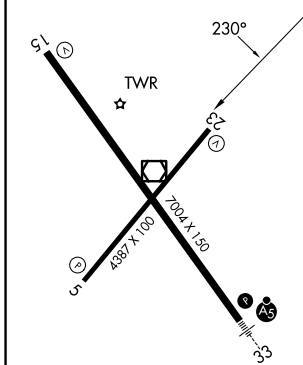
DME required.		MISSED APPROACH: Climb to 3000 then climbing right turn to 4500 on heading 075° and JST VOR/DME R-050 to JUDEY/JST 10 DME/RADAR and hold.	
Rwy 23 helicopter visibility reduction below 3/4 SM NA.			
ATIS <b>118.325</b>	JOHNSTOWN APP CON ★ <b>121.2 299.2</b>	JOHNSTOWN TOWER ★ <b>125.75 (CTAF) 0</b>	GND CON <b>121.6</b>
			UNICOM <b>122.95</b>



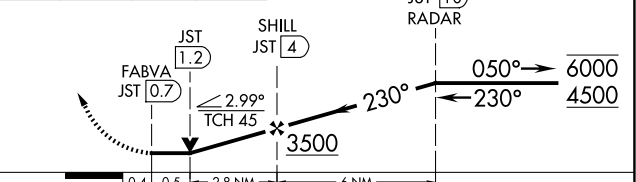
JOHNSTOWN  
113.0 JST  
Chan 77



ELEV 2284	<b>D</b>	TDZE 2284
-----------	----------	-----------



3000	4500	JST R-050	JUDEY JST 10 RADAR	One Minute Holding Pattern
------	------	-----------	--------------------	----------------------------



CATEGORY	A	B	C	D
S-23	2620-1 336 (400-1)			
CIRCLING	2700-1 416 (500-1)	2880-1 596 (600-1)	2880-1½ 596 (600-1½)	3000-2¼ 716 (800-2¼)

REIL Rws 5 and 23  
HIRL Rwy 15-33  
MIRL Rwy 5-23

# VOR Z RWY 23

NE-4, 14 MAY 2026 to 11 JUN 2026

NE-4, 14 MAY 2026 to 11 JUN 2026