

WAAS CH 86620	APP CRS 358°	Rwy Idg TDZE Apt Elev	5998 202 206
-------------------------	------------------------	-----------------------------	-----------------------------------------

RNAV (GPS) RWY 36

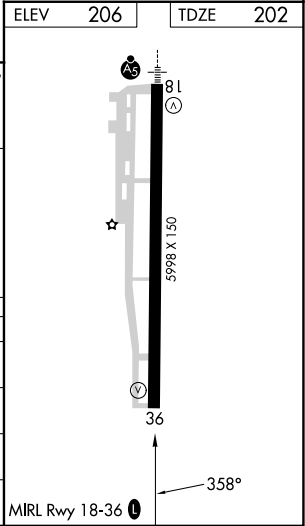
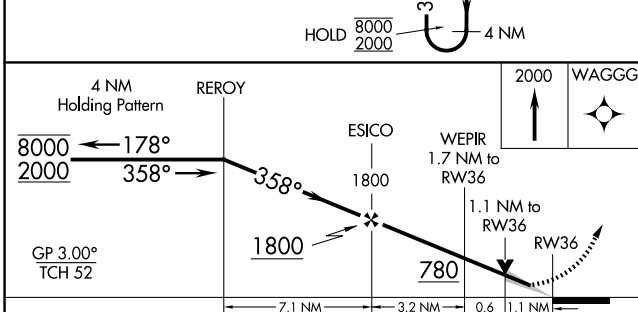
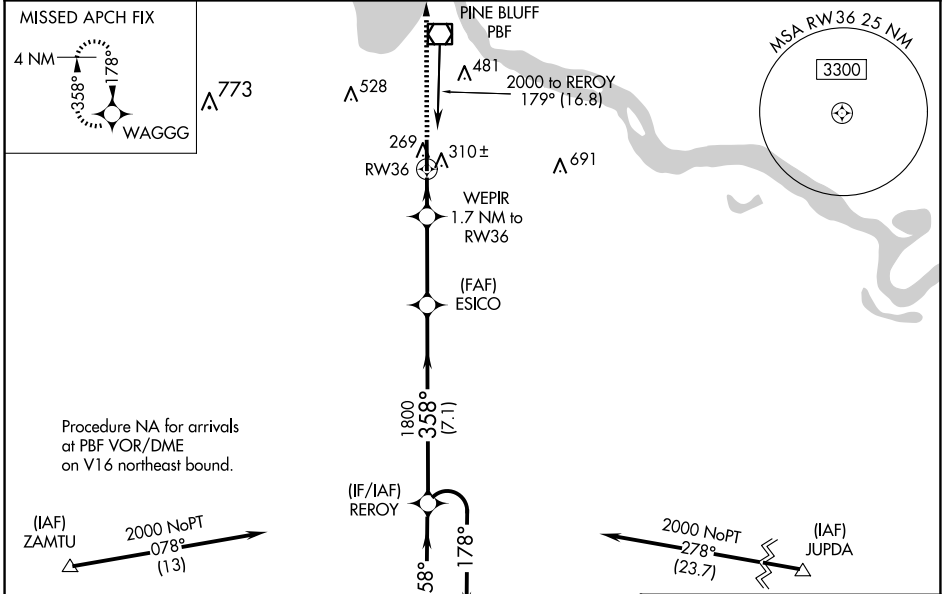
PINEBLUFF RGNL/GRIDER FLD (PBF)

RNP APCH - GPS.

Baro-VNAV and VDP NA when using Stuttgart altimeter setting. For uncompensated Baro-VNAV systems, LNAV/VNAV NA below -15°C or above 42°C. When local altimeter setting not received, use Stuttgart altimeter setting and increase LPV DA to 527 feet. Increase LNAV/VNAV DA to 562 feet. Increase all MDAs 80 feet and LNAV visibility Cat C/D ¼ SM, and Circling visibility Cat C/D ¼ SM.

MISSED APPROACH:
Climb to 2000 direct
WAGGG and hold.

ASOS 120.775	LITTLE ROCK APP CON 119.85 353.6	CLNC DEL 119.85	UNICOM 123.0 (CTAF)
------------------------	--------------------------------------------	---------------------------	-------------------------------



CATEGORY	A	B	C	D
LPV DA	452-1 250 (300-1)			
LNAV/VNAV DA	487-1 285 (300-1)			
LNAV MDA	600-1	398 (400-1)	600-1 ¹ / ₈	398 (400-1 ¹ / ₈)
CIRCLING	660-1 454 (500-1)	680-1 474 (500-1)	840-1 ³ / ₄ 634 (700-1 ³ / ₄)	880-2 ¹ / ₄ 674 (700-2 ¹ / ₄)

SC-1, 14 MAY 2026 to 11 JUN 2026

SC-1, 14 MAY 2026 to 11 JUN 2026