

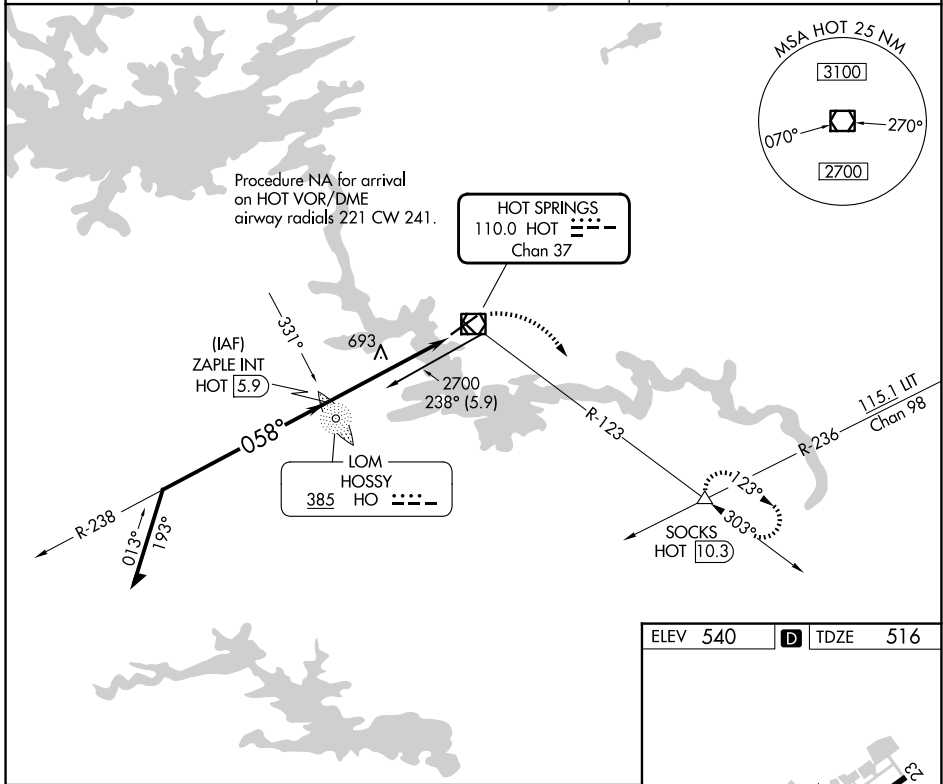
VOR/DME HOT 110.0 Chan 37	APP CRS 058°	Rwy Ldg 6595 TDZE 516 Apt Elev 540
---	------------------------	---

VOR RWY 5

MEML FLD (HOT)

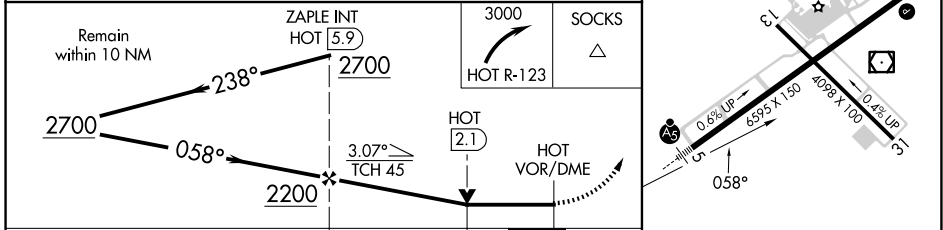
ADF or DME required for procedure entry. ADF or DME required.	MALSR 	MISSED APPROACH: Climbing right turn to 3000 on HOT R-123 to SOCKS INT/HOT 10.3 DME and hold.
 Circling NA northwest of Rws 5 and 23. Circling Rwy 31 NA at night.		

ASOS 119.925	MEMPHIS CENTER 128.475 377.15	UNICOM 123.0 (CTAF) 0
------------------------	---	---------------------------------



SC-1, 14 MAY 2026 to 11 JUN 2026

SC-1, 14 MAY 2026 to 11 JUN 2026



	ZAPLE INT HOT 5.9		3000		SOCKS
	2700		HOT R-123		△
	2700		HOT 2.1		
	2200		HOT VOR/DME		
	3.8 NM		1.3		0.8
CATEGORY	A	B	C	D	
S-5	960-1/2 444 (500-1/2)		960-7/8 444 (500-7/8)		
CIRCLING	1080-1 540 (600-1)		1380-2 1/2 840 (900-2 1/2)		1620-3 1080 (1100-3)

ELEV 540	D	TDZE 516
----------	---	----------

HIRL Rwy 5-23 0
MIRL Rwy 13-31 0
REIL Rwy 13 0