

LAKEE-THREE DEPARTURE (LAKEE3, LAKEE)

MIRAMAR MCAS (JOE FOSS FLD) (KNKX)

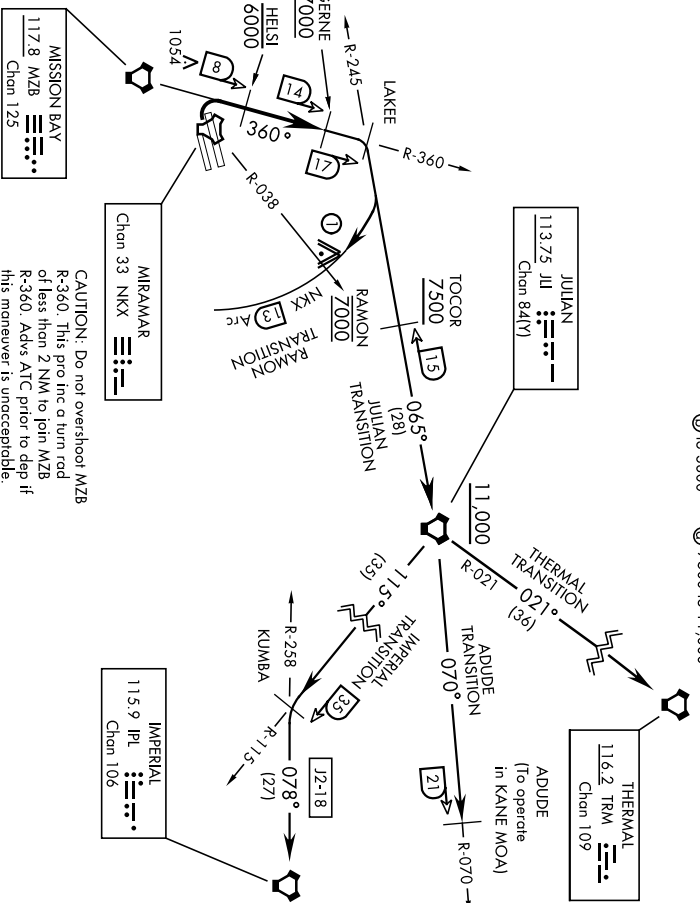
SAN DIEGO, CALIFORNIA

ATS ★ 133.475 352.0
 FOSS TOWER ★
 135.2 298.925
 SOCIAL DEP CON
 132.2 269.1 E

Rwy	Knots	60	120	180	240	300	360
* 24L/R	V/Vl(fpm)	260	520	780	1040	1300	1560
** 24L/R	V/Vl(fpm)	280	560	840	1120	1400	1680
† 24L/R	V/Vl(fpm)	678	1356	2034	2712	3390	4068
‡ 24L/R	V/Vl(fpm)	235	470	705	940	1175	1410

* Military Minimum ** Civil Minimum † ATC Climb Rate

- ⊙ to 3600 ⊕ to 7000
- ⊙ to 3800 ⊕ 7500 to 11,000



EMERG SAFE ALT 100 NM 13,600

⊙ 3018' Twr 12.5 NM from DER.

DEPARTURE ROUTE DESCRIPTION

TAKEOFF RWY 24L/R: Turn right to intercept and proceed via MZB VORTAC R-360 to LAKEE INT. Cross HEISI at or below 6000. Cross GERNE at or above 7000. Thence...
ADUDE TRANSITION (LAKEE3·ADUDE): ... Via JIL VORTAC R-245 to JIL. Then via JIL R-070 to ADUDE. Cross TOCOR at or above 7500. Cross JIL VORTAC at or above 11,000. (To operate in KANE MOA.)
IMPERIAL TRANSITION (LAKEE3·IPL): ... Via JIL VORTAC R-245 to JIL. Then via JIL R-115 to KUMBA INT, then via IPL VORTAC R-258 to IPL. Cross TOCOR at or above 7500. Cross JIL VORTAC at or above 11,000.

(CONTINUED ON FOLLOWING PAGE)

LAKEE-THREE DEPARTURE (LAKEE3, LAKEE)

Orig 13SEP18

SAN DIEGO, CALIFORNIA
 MIRAMAR MCAS (JOE FOSS FLD) (KNKX)

LAKEE-THREE DEPARTURE (LAKEE3.LAKEE)MIRAMAR MCAS (JOE FOSS FLD) (KNKX)
SAN DIEGO, CALIFORNIA

[USN]

DEPARTURE ROUTE DESCRIPTION

JULIAN TRANSITION (LAKEE3·JUL): ... Via JII VORTAC R-245 to JII. Cross TOCOR at or above 7500. Cross JII VORTAC at or above 11,000.

RAMON TRANSITION (LAKEE3·RAMON): ... Via JII VORTAC R-245 to NKX TACAN 13 DME. Then arc NE of NKX via the 13 DME arc to RAMON. Cross RAMON at 7000 mandatory.

THERMAL TRANSITION (LAKEE3·TRM): .. Via JII VORTAC R-245 to JII. Then via JII R-021 to TRM VORTAC. Cross TOCOR at or above 7500. Cross JII VORTAC at or above 11,000.

LAKEE-THREE DEPARTURE (LAKEE3.LAKEE)

Orig 13SEP18

SAN DIEGO, CALIFORNIA
MIRAMAR MCAS (JOE FOSS FLD) (KNKX)