

APP CRS	Rwy Ldg	<b>5601</b>
<b>225°</b>	TDZE	<b>221</b>
	Apt Elev	<b>221</b>

# RNAV (GPS) RWY 23

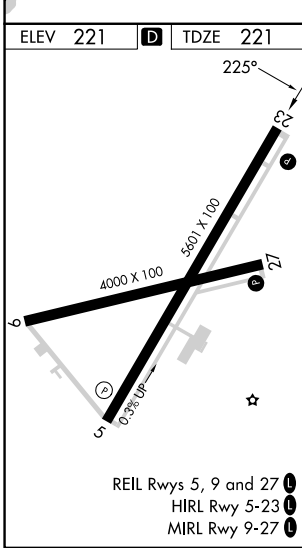
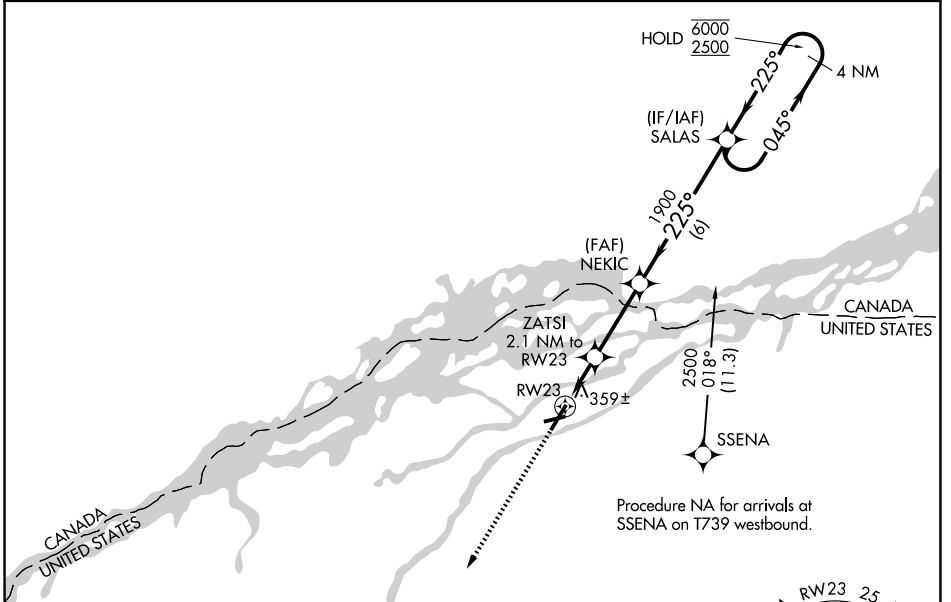
MASSENA INTL-RICHARDS FLD (MSS)

RNP APCH - GPS

**⚠** Rwy 23 helicopter visibility reduction below 1 SM NA. Straight-in Rwy 23 NA at night, Circling Rwy 9, 23, 27 NA at night. When local altimeter setting not received, use PTD altimeter setting and increase all MDAs 80 feet and LNAV visibility Cats C and D 1/8 SM, and increase Circling visibility Cats C and D 1/4 SM.

MISSED APPROACH: Climb to 2800 direct DORIE and hold.

ASOS <b>128.075</b>	BOSTON CENTER <b>135.25 377.1</b>	UNICOM <b>123.0 (CTAF) 0</b>
------------------------	--------------------------------------	---------------------------------



ELEV 221	TDZE 221				
		Visual Segment - Obstacles.			
2800	DORIE	ZATSI 2.1 NM to RWY 23		NEKIC	SALAS 4 NM Holding Pattern
		900	1900	6000	2500
		2.1 NM	3.1 NM	6 NM	
CATEGORY	A	B	C	D	
LNAV MDA	680-1	458 (500-1)	680-1 3/8	458 (500-1 3/8)	
CIRCLING	740-1	519 (600-1)	880-1 3/4 659 (700-1 3/4)	880-2 659 (700-2)	

NE-2, 14 MAY 2026 to 11 JUN 2026

NE-2, 14 MAY 2026 to 11 JUN 2026