

APP CRS	Rwy Ldg	<b>4000</b>
<b>270°</b>	TDZE	<b>205</b>
	Apt Elev	<b>221</b>

# RNAV (GPS) RWY 27

MASSENA INTL-RICHARDS FLD (MSS)

RNP APCH - GPS.

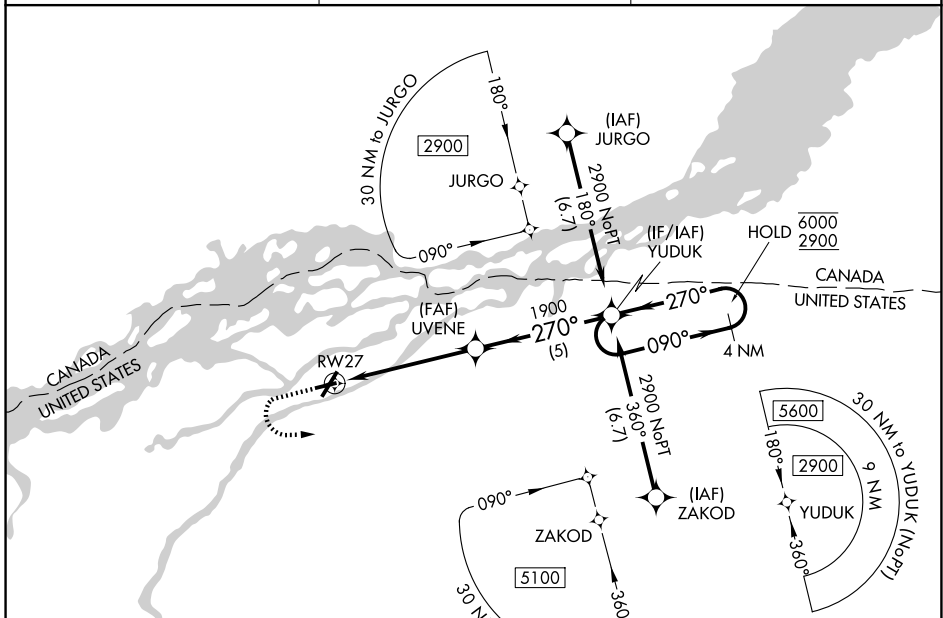
**▼** Rwy 27 helicopter visibility reduction below 1 SM NA. Straight-in Rwy 27 NA at night, Circling Rwy 9, 23, 27 NA at night. When local altimeter setting not received, use PTD altimeter setting and increase all MDAs 80 feet and visibility Cats C and D 1/4 SM, and increase Circling visibility Cats C and D 1/4 SM.

**MISSED APPROACH:** Climb to 1000 then climbing left turn 2900 direct YUDUK and hold.

ASOS  
**128.075**

BOSTON CENTER  
**135.25 377.1**

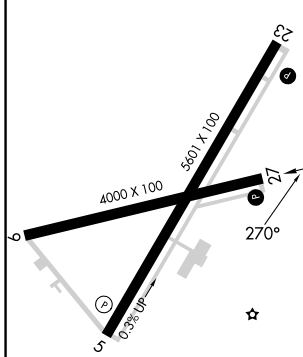
UNICOM  
**123.0 (CTAF) 0**



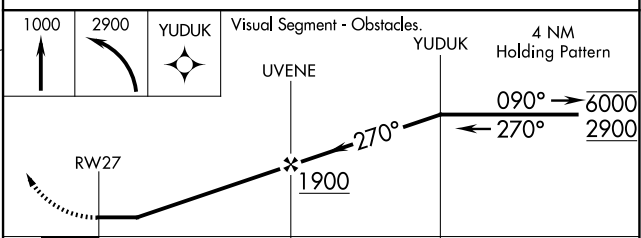
NE-2, 14 MAY 2026 to 11 JUN 2026

NE-2, 14 MAY 2026 to 11 JUN 2026

ELEV 221	<b>D</b>	TDZE 205
----------	----------	----------



- REIL Rws 5, 9 and 27 **0**
- HIRL Rwy 5-23 **0**
- MIRL Rwy 9-27 **0**



CATEGORY	A	B	C	D
LNAV MDA	680-1	475 (500-1)	680-1 3/8	475 (500-1 3/8)
CIRCLING	740-1	519 (600-1)	880-1 3/4 659 (700-1 3/4)	880-2 659 (700-2)