

WAAS CH <b>70303</b> <b>W05A</b>	APP CRS <b>045°</b>	Rwy Ldg <b>5601</b> TDZE <b>205</b> Apt Elev <b>221</b>
--	------------------------	---

# RNAV (GPS) RWY 5

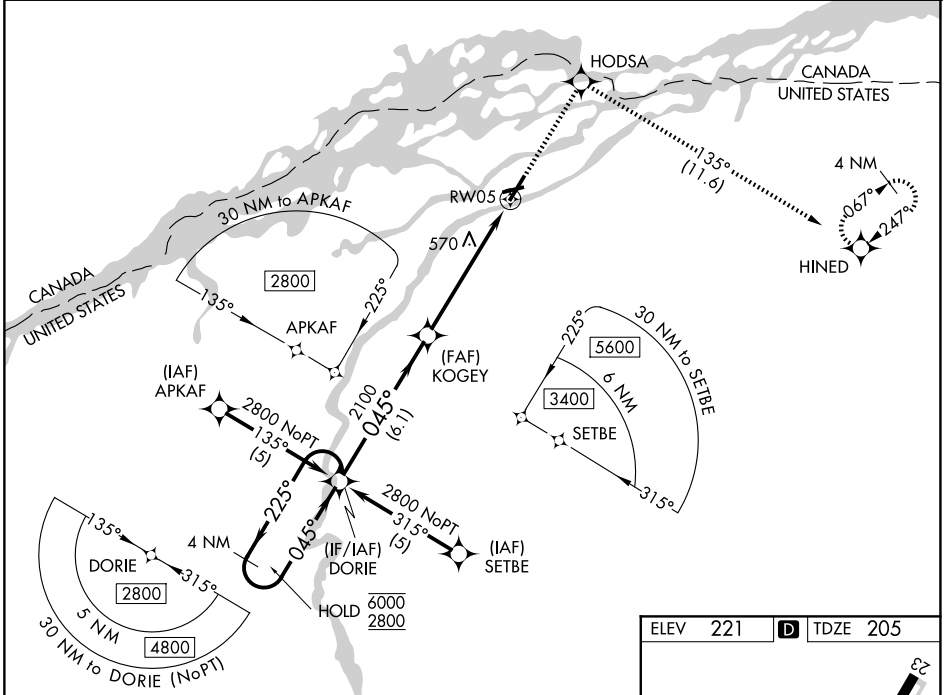
MASSENA INTL-RICHARDS FLD (MSS)

RNP APCH - GPS.

⚠ Circling Rwy 9, 23, 27 NA at night. For uncompensated Baro-VNAV systems, LNAV/VNAV NA below -15°C or above 54°C. When local altimeter setting not received, use PTD altimeter setting: increase LPV DA to 528 feet and all visibilities ¼ SM; increase LNAV/VNAV DA to 933 feet and all visibilities ½ SM; increase all MDAs 80 feet and LNAV visibility Cats C and D ½ SM, and Circling visibility Cats C and D ¼ SM.

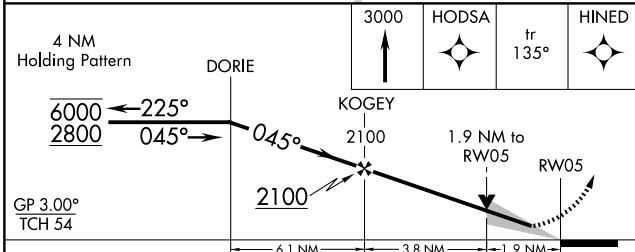
MISSED APPROACH: Climb to 3000 direct HODSA and on track 135° to HINED and hold.

ASOS <b>128.075</b>	BOSTON CENTER <b>135.25 377.1</b>	UNICOM <b>123.0 (CTAF) 1</b>
------------------------	--------------------------------------	---------------------------------

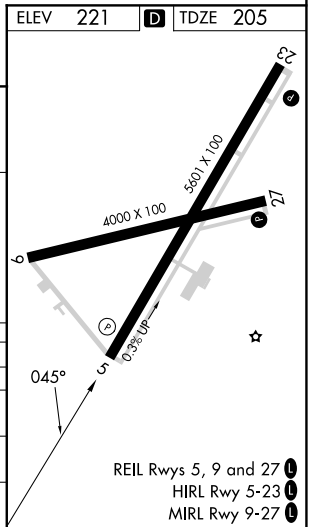


NE-2, 14 MAY 2026 to 11 JUN 2026

NE-2, 14 MAY 2026 to 11 JUN 2026



CATEGORY	A	B	C	D
LPV DA		455-3/4	250 (300-3/4)	
LNAV/VNAV DA		860-17/8	655 (700-17/8)	
LNAV MDA	860-1	655 (700-1)	860-17/8	655 (700-17/8)
CIRCLING	860-1	639 (700-1)	880-17/8 659 (700-17/8)	900-2 1/4 679 (700-2 1/4)



- REIL Rwy 5, 9 and 27 1
- HIRL Rwy 5-23 2
- MIRL Rwy 9-27 3